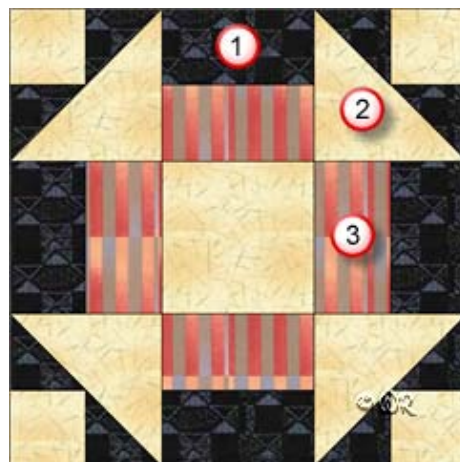


Texas Shoofly



12" finished quilt block
9" finished quilt block
6" finished quilt block

Fabric Placement



Texas Shoofly

12" finished quilt block

How-to Notes



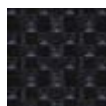
Bisect square on one diagonal



Bisect square on both diagonals

*All seam allowances are $\frac{1}{4}$ " unless noted otherwise

1



Background fabric 1

Cut 4 rectangles $4\frac{1}{2}$ " x $2\frac{1}{2}$ "

Cut 4 squares $2\frac{7}{8}$ " and bisect on one diagonal

2



Fabric 2

Cut 1 square $4\frac{1}{2}$ "

Cut 4 squares $2\frac{1}{2}$ "

Cut 2 squares $4\frac{7}{8}$ " and bisect on one diagonal

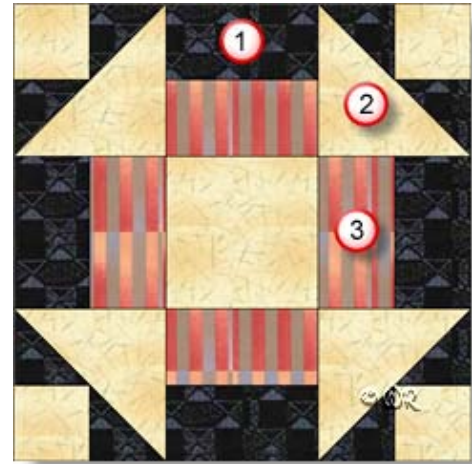
3



Fabric 3

Cut 4 rectangles $4\frac{1}{2}$ " x $2\frac{1}{2}$ "

Fabric Placement



Texas Shoofly

9" finished quilt block

How-to Notes

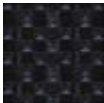




Bisect square on one diagonal

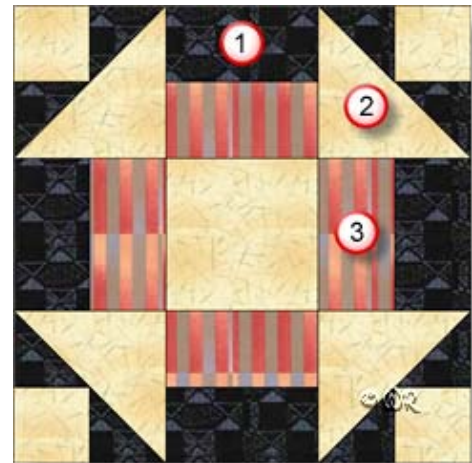


Bisect square on both diagonals

*All seam allowances are 1/4" unless noted otherwise

1		<p>Background fabric 1</p> <p>Cut 4 rectangles 3 1/2" x 2"</p> <p>Cut 4 squares 2 3/8" and bisect on one diagonal</p>
2		<p>Fabric 2</p> <p>Cut 1 square 3 1/2"</p> <p>Cut 4 squares 2"</p> <p>Cut 2 squares 3 7/8" and bisect on one diagonal</p>
3		<p>Fabric 3</p> <p>Cut 4 rectangles 3 1/2" x 2"</p>

Fabric Placement



Texas Shoofly

6" finished quilt block

How-to Notes



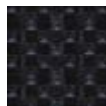
Bisect square on one diagonal



Bisect square on both diagonals

*All seam allowances are 1/4" unless noted otherwise

1



Background fabric 1

Cut 4 rectangles 2 1/2" x 1 1/2"

Cut 4 squares 1 7/8" and bisect on one diagonal

2



Fabric 2

Cut 1 square 2 1/2"

Cut 4 squares 1 1/2"

Cut 2 squares 2 7/8" and bisect on one diagonal

3



Fabric 3

Cut 4 rectangles 2 1/2" x 1 1/2"

Texas Shoofly

