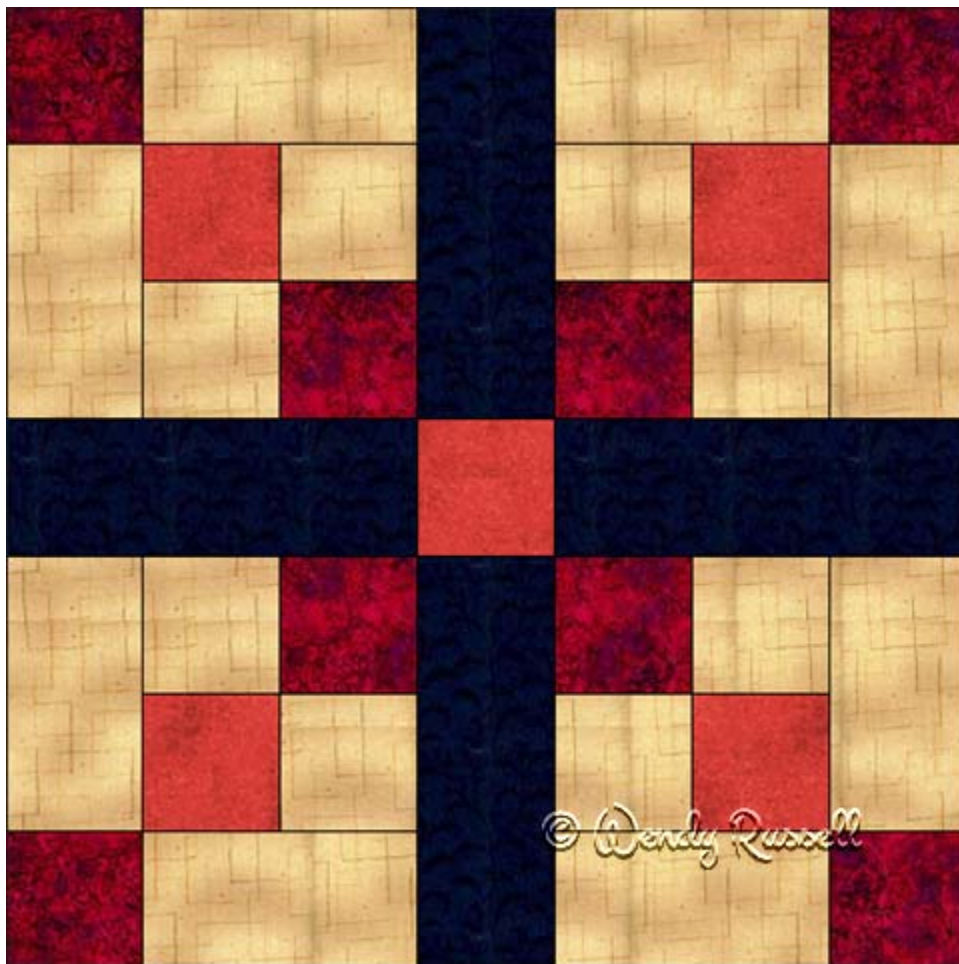


Stone Tiles



- 14" finished quilt block
- 10 ½" finished quilt block
- 7" finished quilt block

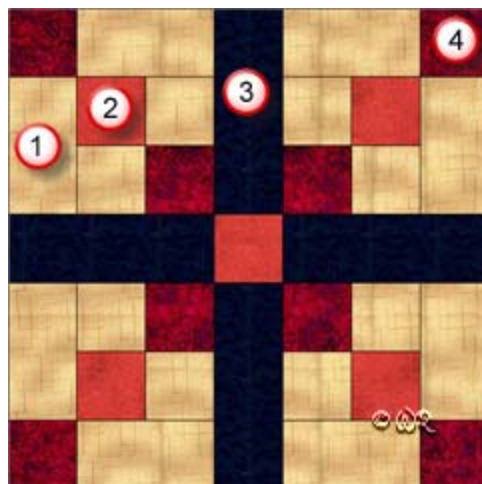
Patchwork Square

Free Quilt Block Pattern

Stone Tiles

14" finished quilt block

Fabric Placement



How-to Notes



Bisect square on one diagonal



Bisect square on both diagonals

*All seam allowances are 1/4" unless noted otherwise

1



Background fabric 1

Cut 8 squares 2 1/2"

Cut 8 rectangles 2 1/2" x 4 1/2"

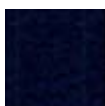
2



Fabric 2

Cut 5 squares 2 1/2"

3



Fabric 3

Cut 4 rectangles 2 1/2" x 6 1/2"

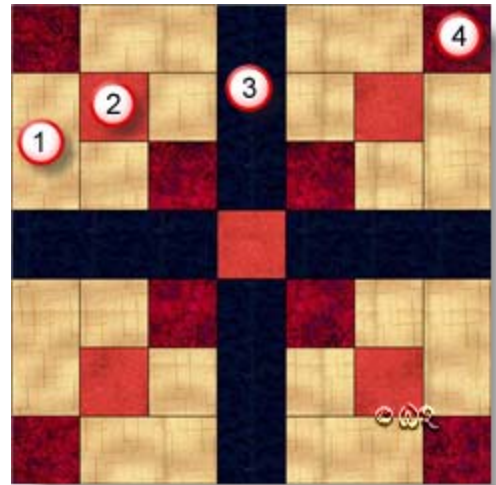
4



Fabric 4

Cut 8 squares 2 1/2"

Fabric Placement



Stone Tiles

10 1/2" finished quilt block

How-to Notes



Bisect square on one diagonal



Bisect square on both diagonals

*All seam allowances are 1/4" unless noted otherwise

1



Background fabric 1

Cut 8 squares 2"
Cut 8 rectangles 2" x 3 1/2"

2



Fabric 2

Cut 5 squares 2"

3



Fabric 3

Cut 4 rectangles 2" x 5"

4



Fabric 4

Cut 8 squares 2"

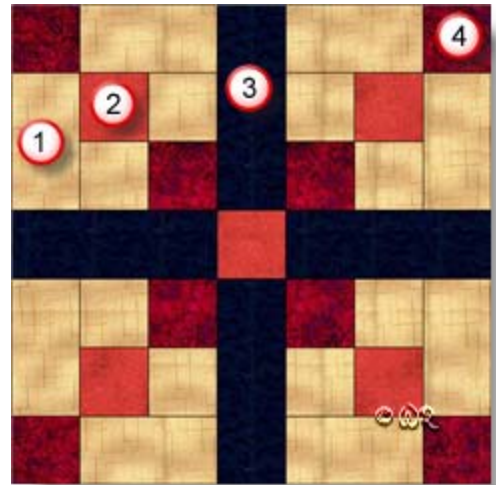
Patchwork Square

Free Quilt Block Pattern

Stone Tiles

7" finished quilt block

Fabric Placement



How-to Notes






Bisect square on one diagonal



Bisect square on both diagonals

*All seam allowances are 1/4" unless noted otherwise

<p>1</p> 	<p>Background fabric 1 Cut 8 squares 1 1/2" Cut 8 rectangles 1 1/2" x 2 1/2"</p>
<p>2</p> 	<p>Fabric 2 Cut 5 squares 1 1/2"</p>
<p>3</p> 	<p>Fabric 3 Cut 4 rectangles 1 1/2" x 3 1/2"</p>
<p>4</p> 	<p>Fabric 4 Cut 8 squares 1 1/2"</p>

Stone Tiles

