

Squash Blossom



- 15" finished quilt block
- 12" finished quilt block
- 9" finished quilt block
- 6" finished quilt block

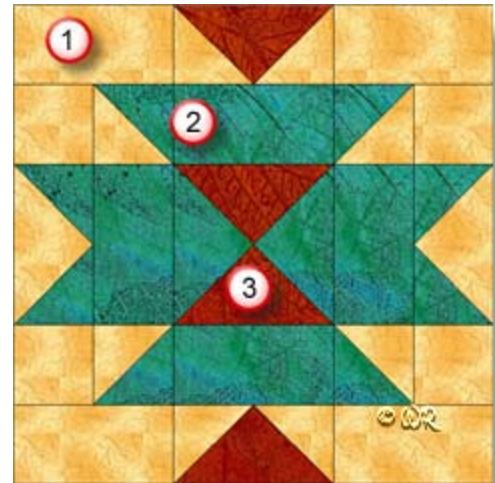
Patchwork Square

Free Quilt Block Pattern

Squash Blossom

15" finished quilt block

Fabric Placement



How-to Notes



Bisect square on one diagonal



Bisect square on both diagonals

*All seam allowances are $\frac{1}{4}$ " and included in cutting measurements unless noted otherwise

1



Fabric 1

Cut 4 squares 3"

Cut 4 squares $3\frac{3}{8}$ " and bisect on one diagonal

Cut 4 rectangles 3" x $5\frac{1}{2}$ "

Cut 1 square $6\frac{1}{4}$ " and bisect on both diagonals (*you will have two triangles left over for a second block*)

2



Fabric 2

Cut 4 squares $3\frac{3}{8}$ " and bisect on one diagonal

Cut 4 rectangles 3" x $5\frac{1}{2}$ "

Cut 1 square $6\frac{1}{4}$ " and bisect on both diagonals (*you will have two triangles left over for a second block*)

3



Fabric 3

Cut 1 square $6\frac{1}{4}$ " and bisect on both diagonals

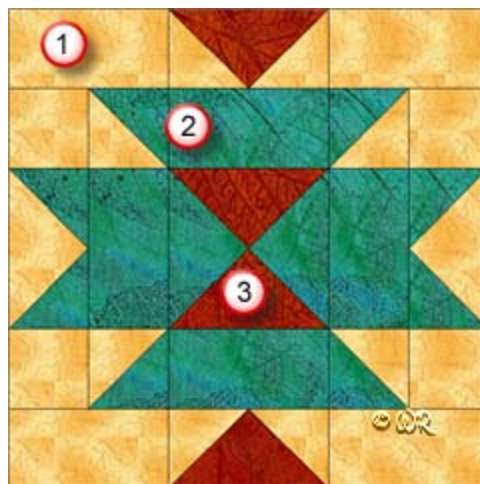
Patchwork Square

Free Quilt Block Pattern

Squash Blossom

12" finished quilt block

Fabric Placement



How-to Notes



Bisect square on one diagonal



Bisect square on both diagonals

*All seam allowances are $\frac{1}{4}$ " and included in cutting measurements unless noted otherwise

1



Fabric 1

Cut 4 squares $2\frac{1}{2}$ "

Cut 4 squares $2\frac{7}{8}$ " and bisect on one diagonal

Cut 4 rectangles $2\frac{1}{2}$ " x $4\frac{1}{2}$ "

Cut 1 square $5\frac{1}{4}$ " and bisect on both diagonals (*you will have two triangles left over for a second block*)

2



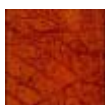
Fabric 2

Cut 4 squares $2\frac{7}{8}$ " and bisect on one diagonal

Cut 4 rectangles $2\frac{1}{2}$ " x $4\frac{1}{2}$ "

Cut 1 square $5\frac{1}{4}$ " and bisect on both diagonals (*you will have two triangles left over for a second block*)

3



Fabric 3

Cut 1 square $5\frac{1}{4}$ " and bisect on both diagonals

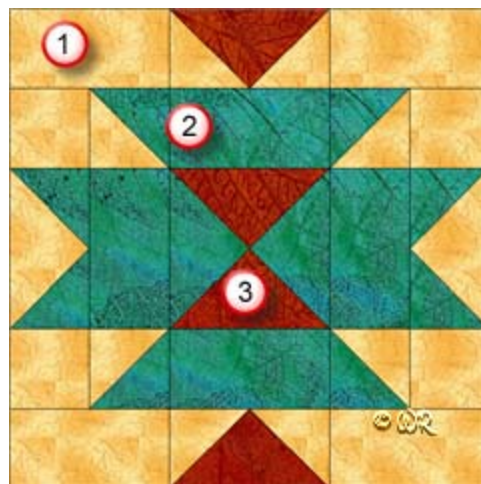
Patchwork Square

Free Quilt Block Pattern

Squash Blossom

9" finished quilt block

Fabric Placement



How-to Notes



Bisect square on one diagonal



Bisect square on both diagonals

*All seam allowances are $\frac{1}{4}$ " and included in cutting measurements unless noted otherwise

1



Fabric 1

Cut 4 squares 2"

Cut 4 squares $2\frac{3}{8}$ " and bisect on one diagonal

Cut 4 rectangles 2" x $3\frac{1}{2}$ "

Cut 1 square $4\frac{1}{4}$ " and bisect on both diagonals (*you will have two triangles left over for a second block*)

2



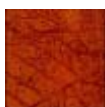
Fabric 2

Cut 4 squares $2\frac{3}{8}$ " and bisect on one diagonal

Cut 4 rectangles 2" x $3\frac{1}{2}$ "

Cut 1 square $4\frac{1}{4}$ " and bisect on both diagonals (*you will have two triangles left over for a second block*)

3



Fabric 3

Cut 1 square $4\frac{1}{4}$ " and bisect on both diagonals

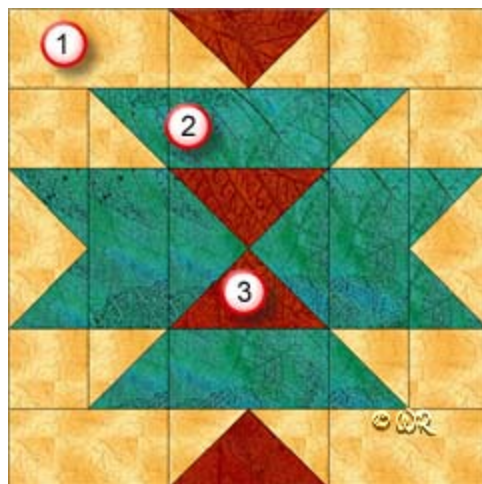
Patchwork Square

Free Quilt Block Pattern

Squash Blossom

6" finished quilt block

Fabric Placement



How-to Notes



Bisect square on one diagonal



Bisect square on both diagonals

*All seam allowances are $\frac{1}{4}$ " and included in cutting measurements unless noted otherwise

1



Fabric 1

Cut 4 squares $1\frac{1}{2}$ "

Cut 4 squares $1\frac{7}{8}$ " and bisect on one diagonal

Cut 4 rectangles $1\frac{1}{2}$ " x $2\frac{1}{2}$ "

Cut 1 square $3\frac{1}{4}$ " and bisect on both diagonals (*you will have two triangles left over for a second block*)

2



Fabric 2

Cut 4 squares $1\frac{7}{8}$ " and bisect on one diagonal

Cut 4 rectangles $1\frac{1}{2}$ " x $2\frac{1}{2}$ "

Cut 1 square $3\frac{1}{4}$ " and bisect on both diagonals (*you will have two triangles left over for a second block*)

3



Fabric 3

Cut 1 square $3\frac{1}{4}$ " and bisect on both diagonals

Patchwork Square

Free Quilt Block Pattern

Squash Blossom

