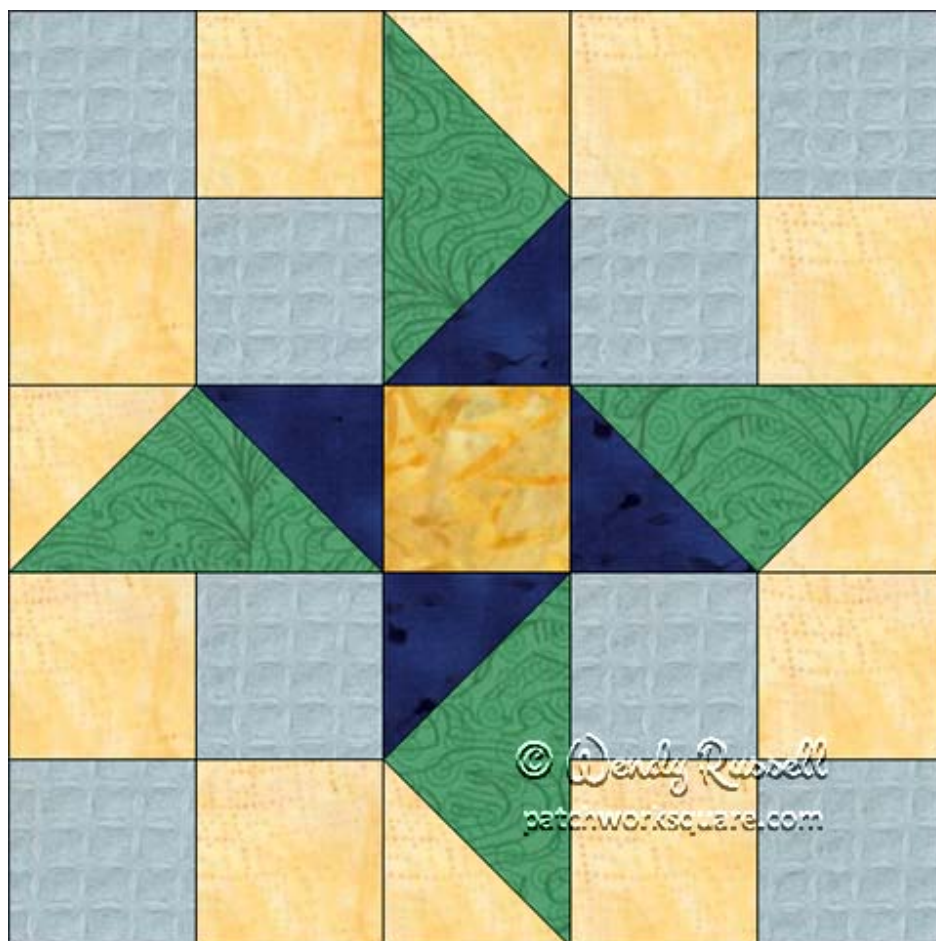


## Sandy Dunes



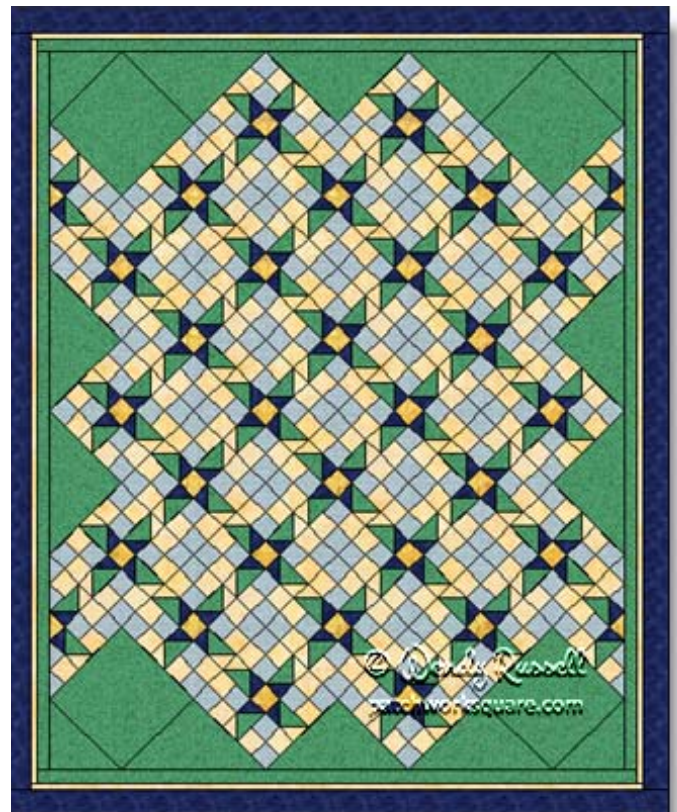
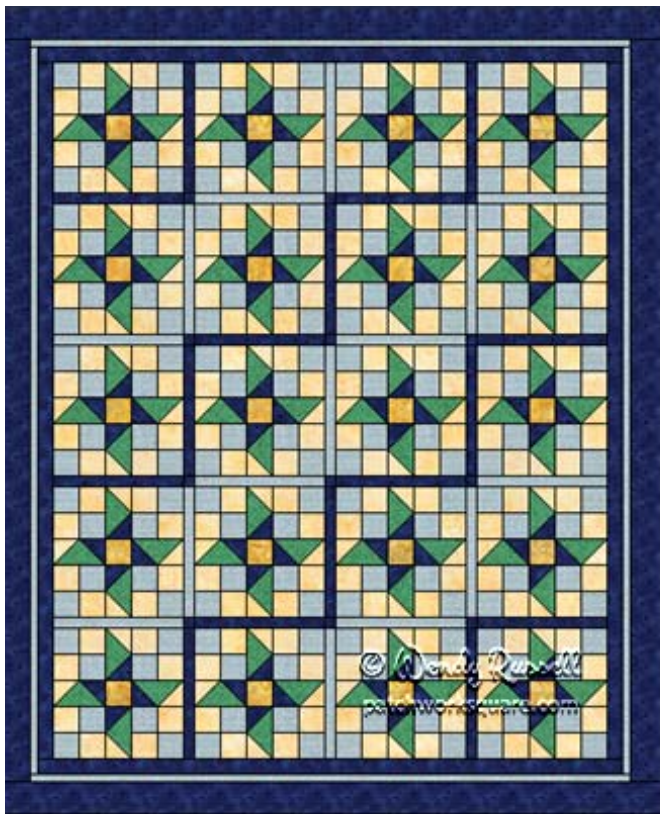
10" finished quilt block

7 ½" finished quilt block

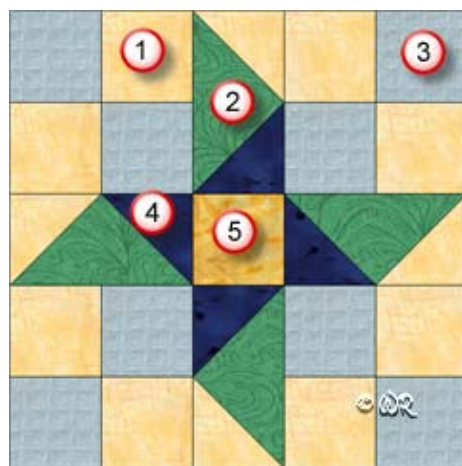
5" finished quilt block

# Sandy Dunes

## Sample Quilt Layouts



Fabric Placement



## Sandy Dunes

10" finished quilt block

### How-to Notes








Bisect square on one diagonal



Bisect square on both diagonals

\*All seam allowances are 1/4" unless noted otherwise

<b>1</b>		<p><b>Background fabric</b> Cut 8 squares 2 1/2" Cut 2 squares 2 7/8" and bisect on one diagonal</p>
<b>2</b>		<p><b>Fabric 2</b> Cut 1 square 5 1/4" and bisect on both diagonals</p>
<b>3</b>		<p><b>Fabric 3</b> Cut 8 squares 2 1/2"</p>
<b>4</b>		<p><b>Fabric 4</b> Cut 2 squares 2 7/8" and bisect on one diagonal</p>
<b>5</b>		<p><b>Fabric 5</b> Cut 1 square 2 1/2"</p>

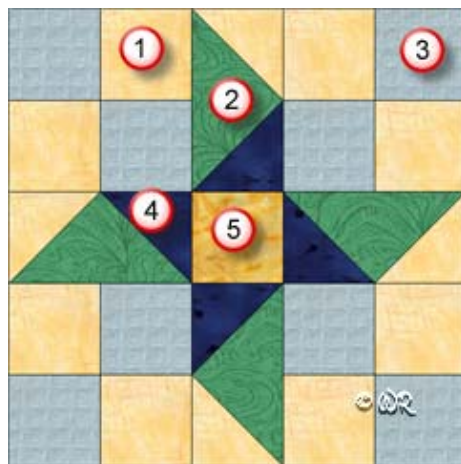
# Patchwork Square

Free Quilt Block Pattern

## Sandy Dunes

7 1/2" finished quilt block

Fabric Placement



### How-to Notes








Bisect square on one diagonal



Bisect square on both diagonals

\*All seam allowances are 1/4" unless noted otherwise

<b>1</b>		<b>Background fabric</b> Cut 8 squares 2" Cut 2 squares 2 3/8" and bisect on one diagonal
<b>2</b>		<b>Fabric 2</b> Cut 1 square 4 1/4" and bisect on both diagonals
<b>3</b>		<b>Fabric 3</b> Cut 8 squares 2"
<b>4</b>		<b>Fabric 4</b> Cut 2 squares 2 3/8" and bisect on one diagonal
<b>5</b>		<b>Fabric 5</b> Cut 1 square 2"

Fabric Placement



## Sandy Dunes

5" finished quilt block

### How-to Notes








Bisect square on one diagonal



Bisect square on both diagonals

\*All seam allowances are 1/4" unless noted otherwise

<b>1</b>		<p><b>Background fabric</b> Cut 8 squares 1 1/2" Cut 2 squares 1 7/8" and bisect on one diagonal</p>
<b>2</b>		<p><b>Fabric 2</b> Cut 1 square 3 1/4" and bisect on both diagonals</p>
<b>3</b>		<p><b>Fabric 3</b> Cut 8 squares 1 1/2"</p>
<b>4</b>		<p><b>Fabric 4</b> Cut 2 squares 1 7/8" and bisect on one diagonal</p>
<b>5</b>		<p><b>Fabric 5</b> Cut 1 square 1 1/2"</p>

## Sandy Dunes

