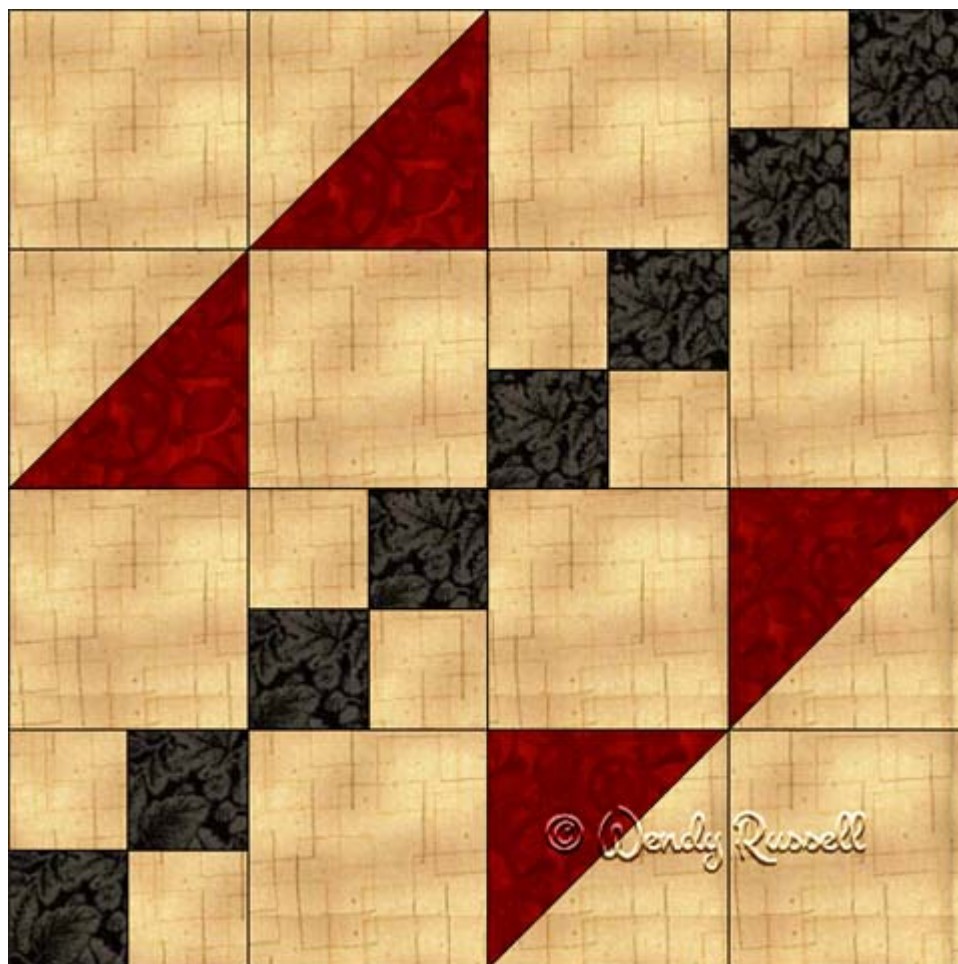


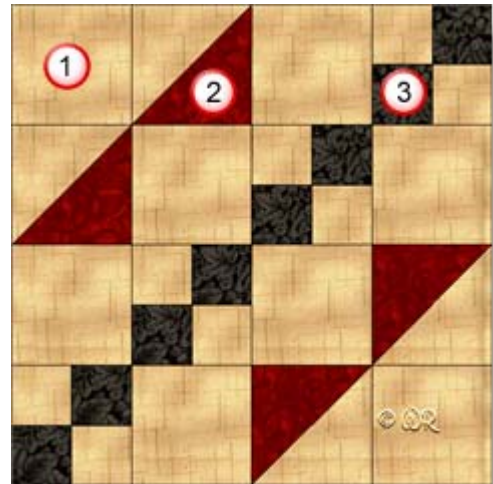
Road to Kansas



12" finished quilt block

8" finished quilt block

Fabric Placement



Road to Kansas

12" finished quilt block

How-to Notes



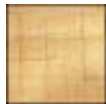
Bisect square on one diagonal



Bisect square on both diagonals

*All seam allowances are $\frac{1}{4}$ " unless noted otherwise

1



Fabric 1

Cut 8 squares 2"

Cut 8 squares 3 $\frac{1}{2}$ "

Cut 2 squares 3 $\frac{7}{8}$ " and bisect on one diagonal

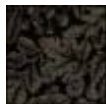
2



Fabric 2

Cut 2 squares 3 $\frac{7}{8}$ " and bisect on one diagonal

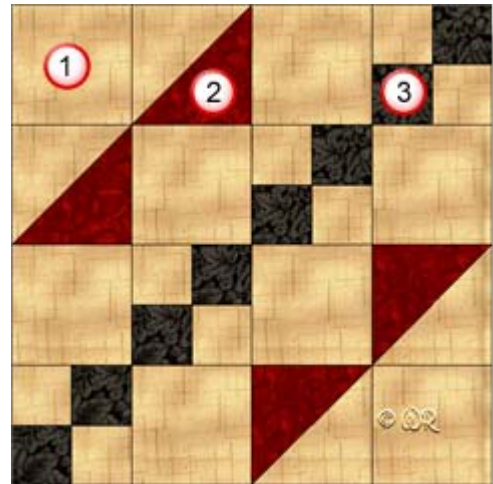
3



Fabric 3

Cut 8 squares 2"

Fabric Placement



Road to Kansas

8" finished quilt block

How-to Notes



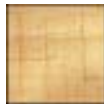
Bisect square on one diagonal



Bisect square on both diagonals

*All seam allowances are $\frac{1}{4}$ " unless noted otherwise

1



Fabric 1

Cut 8 squares $1\frac{1}{2}$ "

Cut 8 squares $2\frac{1}{2}$ "

Cut 2 squares $2\frac{7}{8}$ " and bisect on one diagonal

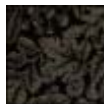
2



Fabric 2

Cut 2 squares $2\frac{7}{8}$ " and bisect on one diagonal

3



Fabric 3

Cut 8 squares $1\frac{1}{2}$ "

