

## Propeller



10" finished quilt block

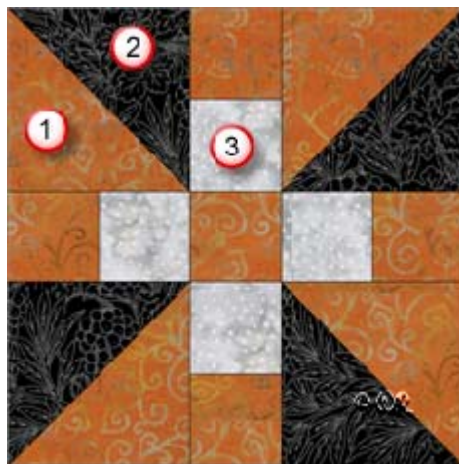
7 ½" finished quilt block

5" finished quilt block

# Patchwork Square

Free Quilt Block Pattern

## Fabric Placement



## Propeller

10" finished quilt block

### How-to Notes



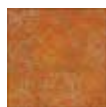
Bisect square on one diagonal



Bisect square on both diagonals

\*All seam allowances are  $\frac{1}{4}$ " unless noted otherwise

**1**



### Background fabric 1

Cut 2 squares  $4\frac{7}{8}$ " and bisect on one diagonal  
Cut 5 squares  $2\frac{1}{2}$ "

**2**



### Fabric 2

Cut 2 squares  $4\frac{7}{8}$ " and bisect on one diagonal

**3**



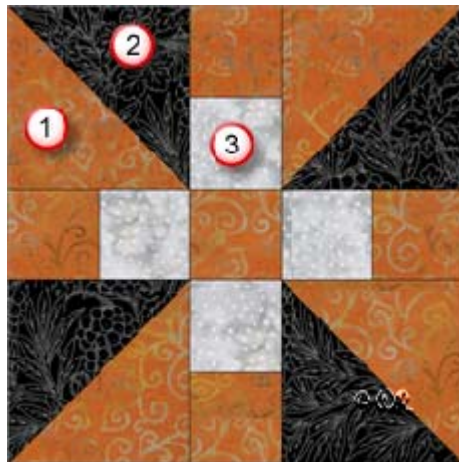
### Fabric 3

Cut 4 squares  $2\frac{1}{2}$ "

# Patchwork Square

Free Quilt Block Pattern

Fabric Placement



## Propeller

7 1/2" finished quilt block

### How-to Notes



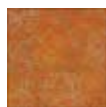
Bisect square on one diagonal



Bisect square on both diagonals

\*All seam allowances are 1/4" unless noted otherwise

**1**



#### Background fabric 1

Cut 2 squares 3 7/8" and bisect on one diagonal  
Cut 5 squares 2"

**2**



#### Fabric 2

Cut 2 squares 3 7/8" and bisect on one diagonal

**3**



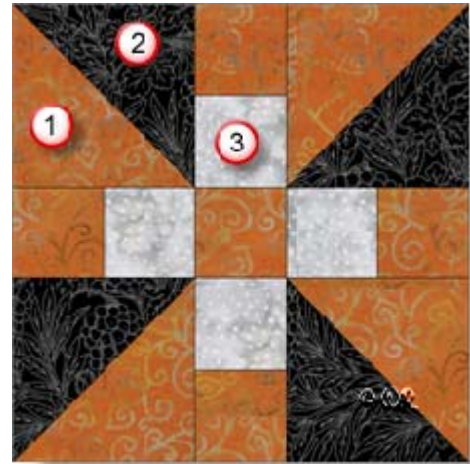
#### Fabric 3

Cut 4 squares 2"

# Patchwork Square

Free Quilt Block Pattern

Fabric Placement



## Propeller

5" finished quilt block

### How-to Notes


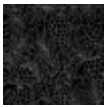



Bisect square on one diagonal



Bisect square on both diagonals

\*All seam allowances are 1/4" unless noted otherwise

<b>1</b>		<b>Background fabric 1</b> Cut 2 squares 2 7/8" and bisect on one diagonal Cut 5 squares 1 1/2"
<b>2</b>		<b>Fabric 2</b> Cut 2 squares 2 7/8" and bisect on one diagonal
<b>3</b>		<b>Fabric 3</b> Cut 4 squares 1 1/2"

# Propeller



Make 4



Make 4

