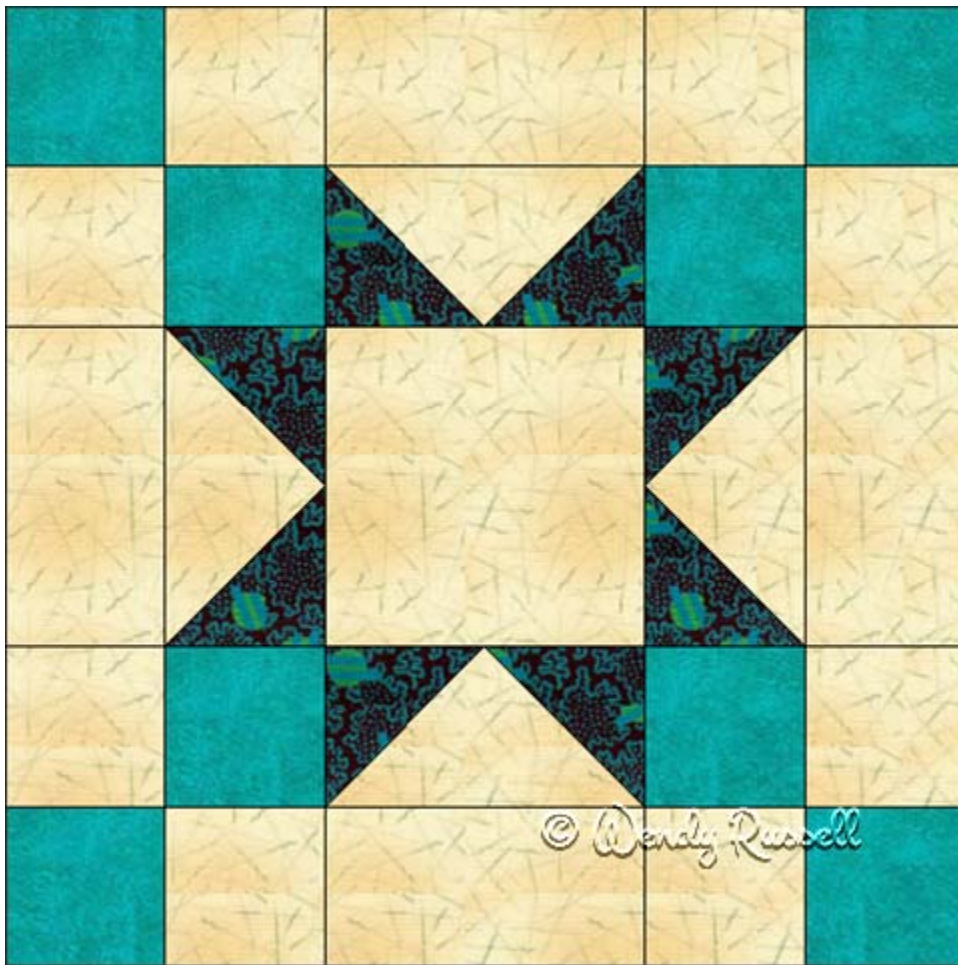
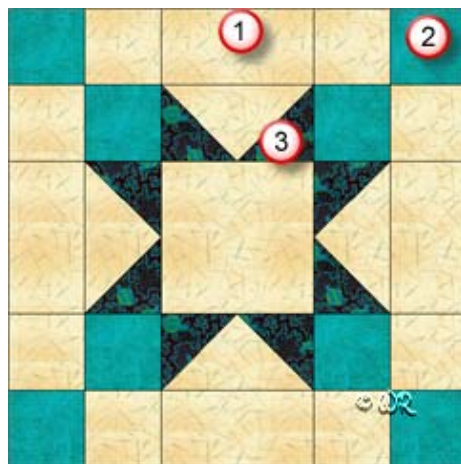


Padre Island Star



12" finished quilt block
9" finished quilt block
6" finished quilt block

Fabric Placement



Padre Island Star

12" finished quilt block

How-to Notes



Bisect square on one diagonal



Bisect square on both diagonals

*All seam allowances are $\frac{1}{4}$ " unless noted otherwise

1



Background fabric 1

Cut centre square $4\frac{1}{2}$ "

Cut 8 squares $2\frac{1}{2}$ "

Cut 4 rectangles $4\frac{1}{2}$ " x $2\frac{1}{2}$ "

Cut 1 square $5\frac{1}{4}$ " and bisect on both diagonals

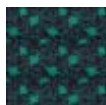
2



Fabric 2

Cut 8 squares $2\frac{1}{2}$ "

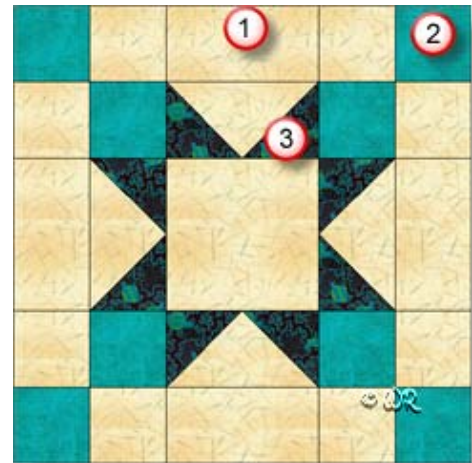
3



Fabric 3

Cut 4 squares $2\frac{7}{8}$ " and bisect on one diagonal

Fabric Placement



Padre Island Star

9" finished quilt block

How-to Notes



Bisect square on one diagonal



Bisect square on both diagonals

*All seam allowances are $\frac{1}{4}$ " unless noted otherwise

1



Background fabric 1

Cut centre square $3\frac{1}{2}$ "

Cut 8 squares 2"

Cut 4 rectangles $3\frac{1}{2}$ " x 2"

Cut 1 square $4\frac{1}{4}$ " and bisect on both diagonals

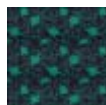
2



Fabric 2

Cut 8 squares 2"

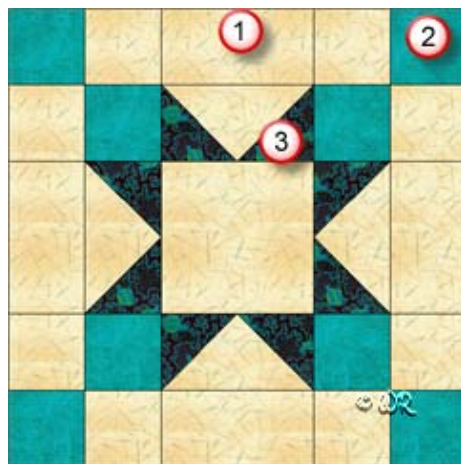
3



Fabric 3

Cut 4 squares $2\frac{3}{8}$ " and bisect on one diagonal

Fabric Placement



Padre Island Star

6" finished quilt block

How-to Notes



Bisect square on one diagonal



Bisect square on both diagonals

*All seam allowances are $\frac{1}{4}$ " unless noted otherwise

1



Background fabric 1

Cut centre square $2\frac{1}{2}$ "

Cut 8 squares $1\frac{1}{2}$ "

Cut 4 rectangles $2\frac{1}{2}$ " x $1\frac{1}{2}$ "

Cut 1 square $3\frac{1}{4}$ " and bisect on both diagonals

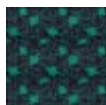
2



Fabric 2

Cut 8 squares $1\frac{1}{2}$ "

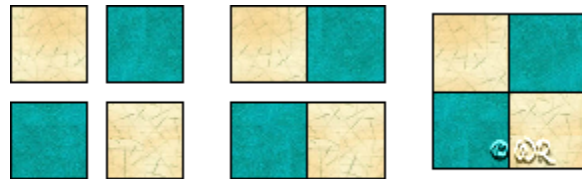
3



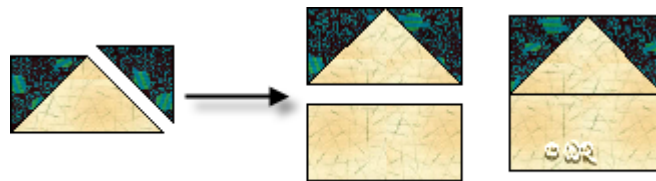
Fabric 3

Cut 4 squares $1\frac{7}{8}$ " and bisect on one diagonal

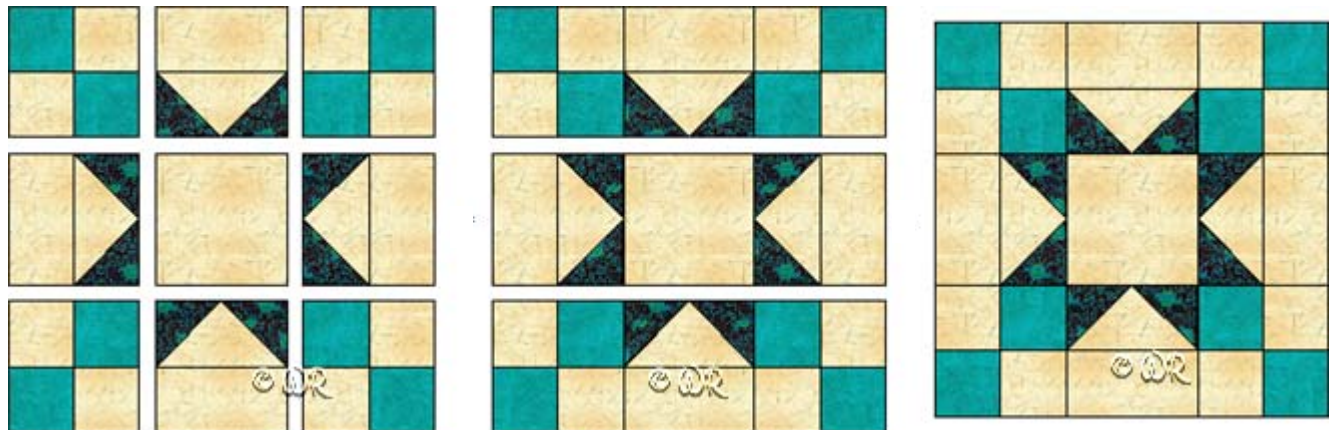
Padre Island Star



Make 4



Make 4



Padre Island Star

Sample Quilt Layouts

