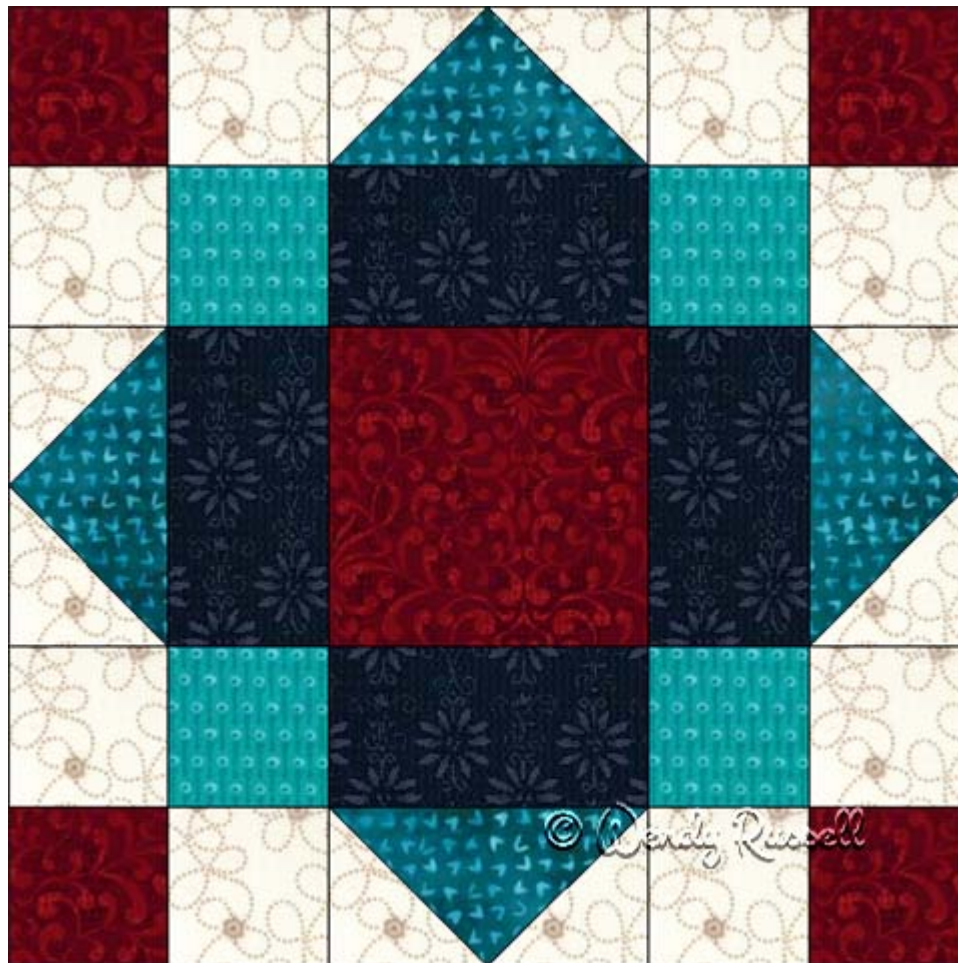


Nine Patch Square



12" finished quilt block

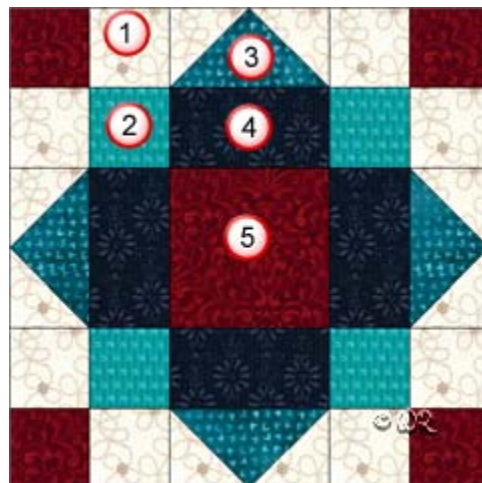
9" finished quilt block

6" finished quilt block

Nine Patch Square

12" finished quilt block

Fabric Placement



How-to Notes



Bisect square on one diagonal



Bisect square on both diagonals

*All seam allowances are 1/4" unless noted otherwise

1



Background fabric 1

Cut 8 squares 2 1/2"

Cut 4 squares 2 7/8" and bisect on one diagonal

2



Fabric 2

Cut 4 squares 2 1/2"

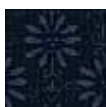
3



Fabric 3

Cut 1 square 5 1/4" and bisect on both diagonals

4



Fabric 4

Cut 4 rectangles 4 1/2" x 2 1/2"

5



Fabric 5

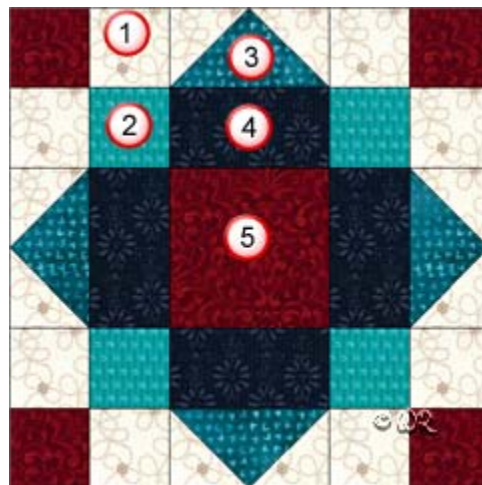
Cut 4 squares 2 1/2"

Cut centre square 4 1/2"

Nine Patch Square

9" finished quilt block

Fabric Placement



How-to Notes



Bisect square on one diagonal



Bisect square on both diagonals

*All seam allowances are 1/4" unless noted otherwise

1



Background fabric 1

Cut 8 squares 2"
Cut 4 squares 2 3/8" and bisect on one diagonal

2



Fabric 2

Cut 4 squares 2"

3



Fabric 3

Cut 1 square 4 1/4" and bisect on both diagonals

4



Fabric 4

Cut 4 rectangles 3 1/2" x 2"

5



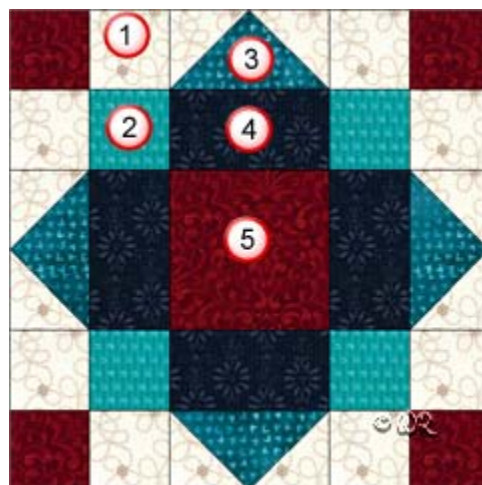
Fabric 5

Cut 4 squares 2"
Cut centre square 3 1/2"

Nine Patch Square

6" finished quilt block

Fabric Placement



How-to Notes



Bisect square on one diagonal



Bisect square on both diagonals

*All seam allowances are 1/4" unless noted otherwise

1



Background fabric 1

Cut 8 squares 1 1/2"

Cut 4 squares 1 7/8" and bisect on one diagonal

2



Fabric 2

Cut 4 squares 1 1/2"

3



Fabric 3

Cut 1 square 3 1/4" and bisect on both diagonals

4



Fabric 4

Cut 4 rectangles 1 1/2" x 2 1/2"

5



Fabric 5

Cut 4 squares 1 1/2"

Cut centre square 2 1/2"

Nine Patch Square

