

Monkey Wrench



10" finished quilt block

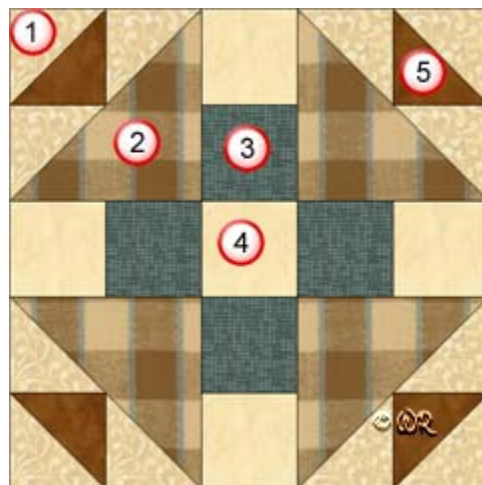
7 ½" finished quilt block

5" finished quilt block

Monkey Wrench

10" finished quilt block

Fabric Placement



How-to Notes



Bisect square on one diagonal



Bisect square on both diagonals

*All seam allowances are 1/4" unless noted otherwise

1



Fabric 1

Cut 6 squares 2 7/8" and bisect on one diagonal

2



Fabric 2

Cut 2 squares 4 7/8" and bisect on one diagonal

3



Fabric 3

Cut 4 squares 2 1/2"

4



Fabric 4

Cut 5 squares 2 1/2"

5



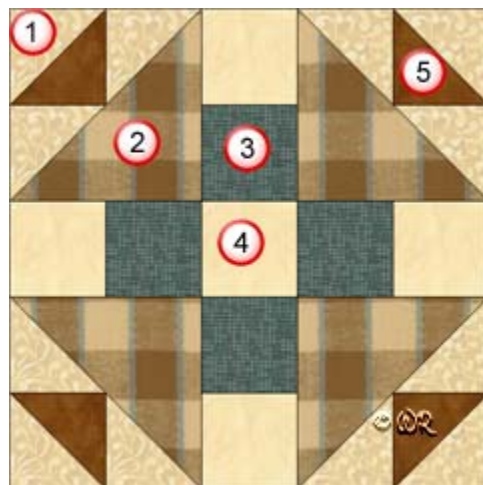
Fabric 5

Cut 2 squares 2 7/8" and bisect on one diagonal

Monkey Wrench

7 1/2" finished quilt block

Fabric Placement



How-to Notes



Bisect square on one diagonal



Bisect square on both diagonals

*All seam allowances are 1/4" unless noted otherwise

1



Fabric 1

Cut 6 squares 2 3/8" and bisect on one diagonal

2



Fabric 2

Cut 2 squares 3 7/8" and bisect on one diagonal

3



Fabric 3

Cut 4 squares 2"

4



Fabric 4

Cut 5 squares 2"

5



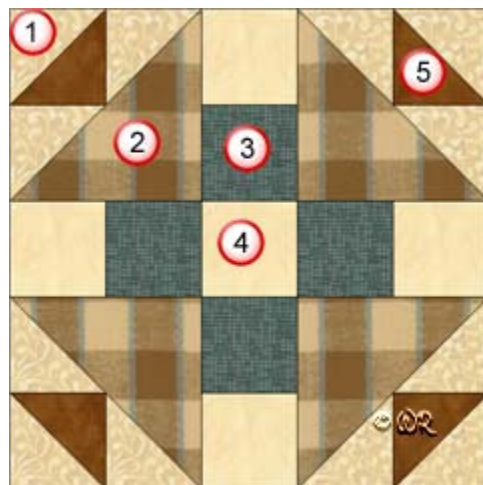
Fabric 5

Cut 2 squares 2 3/8" and bisect on one diagonal

Monkey Wrench

5" finished quilt block

Fabric Placement



How-to Notes



Bisect square on one diagonal



Bisect square on both diagonals

*All seam allowances are 1/4" unless noted otherwise

1



Fabric 1

Cut 6 squares 1 7/8" and bisect on one diagonal

2



Fabric 2

Cut 2 squares 2 7/8" and bisect on one diagonal

3



Fabric 3

Cut 4 squares 1 1/2"

4



Fabric 4

Cut 5 squares 1 1/2"

5



Fabric 5

Cut 2 squares 1 7/8" and bisect on one diagonal

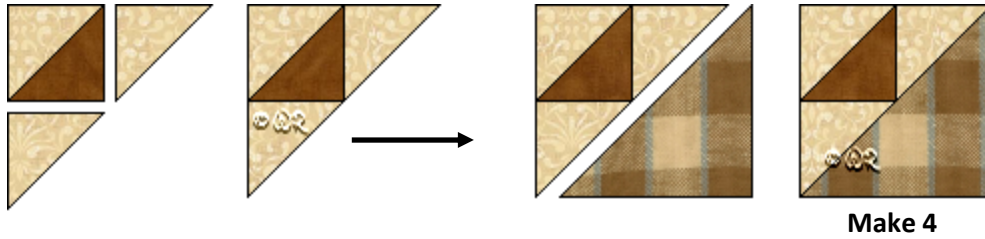
Monkey Wrench



Make 4



Make 4



Make 4

