

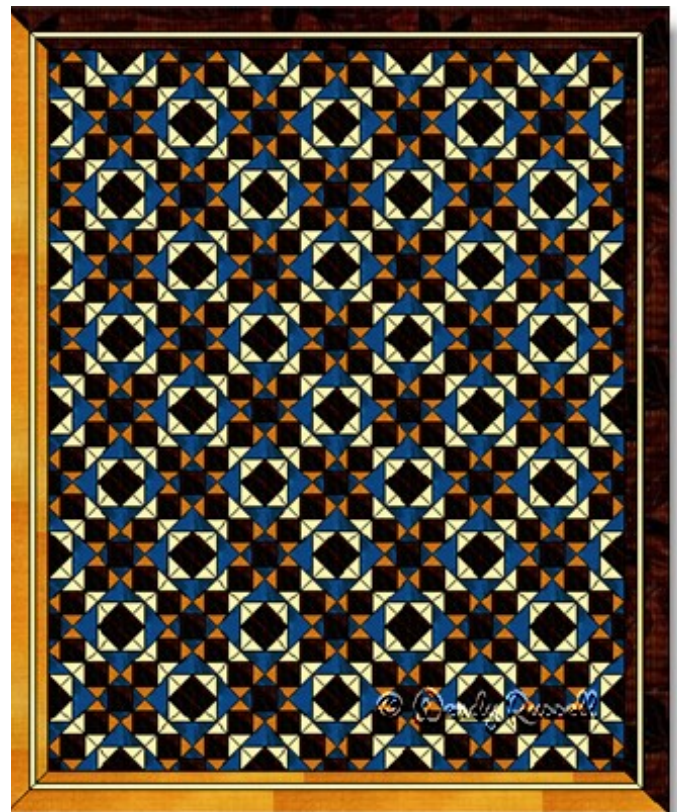
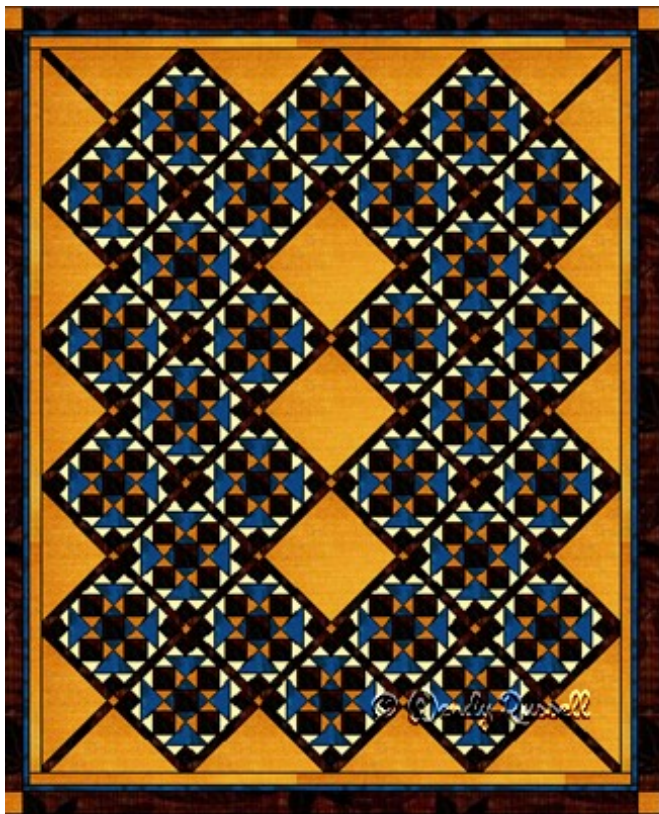
Gettysburg



12" finished quilt block
9" finished quilt block
6" finished quilt block

Gettysburg

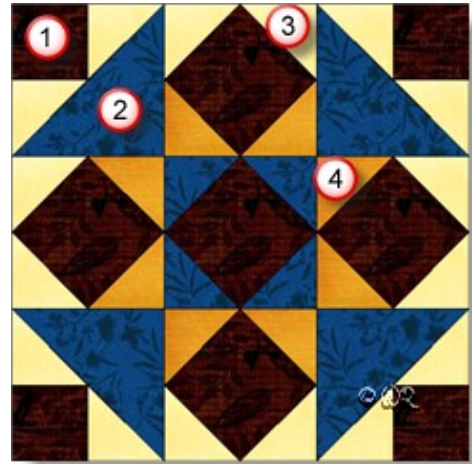
Sample Quilt Layouts



Gettysburg

12" finished quilt block

Fabric Placement



How-to Notes



Bisect square on one diagonal



Bisect square on both diagonals

*All seam allowances are $\frac{1}{4}$ " unless noted otherwise

1



Fabric 1

Cut 4 squares $2\frac{1}{2}$ "
Cut 5 squares $3\frac{3}{8}$ "

2



Fabric 2

Cut 2 squares $4\frac{7}{8}$ " and bisect on one diagonal
Cut 2 squares $2\frac{7}{8}$ " and bisect on one diagonal

3



Fabric 3

Cut 8 squares $2\frac{7}{8}$ " and bisect on one diagonal

4



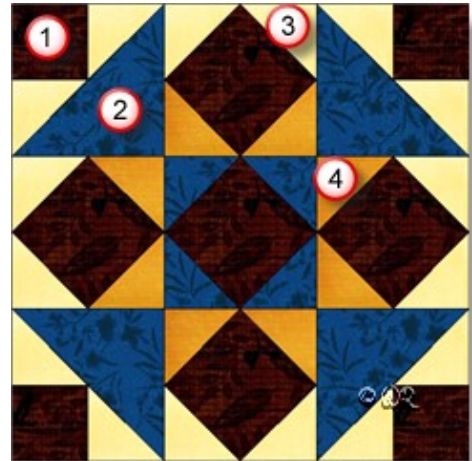
Fabric 4

Cut 4 squares $2\frac{7}{8}$ " and bisect on one diagonal

Gettysburg

9" finished quilt block

Fabric Placement



How-to Notes



Bisect square on one diagonal



Bisect square on both diagonals

*All seam allowances are $\frac{1}{4}$ " unless noted otherwise

1



Fabric 1

Cut 4 squares 2"
 Cut 5 squares 2 $\frac{5}{8}$ "

2



Fabric 2

Cut 2 squares 3 $\frac{7}{8}$ " and bisect on one diagonal
 Cut 2 squares 2 $\frac{3}{8}$ " and bisect on one diagonal

3



Fabric 3

Cut 8 squares 2 $\frac{3}{8}$ " and bisect on one diagonal

4



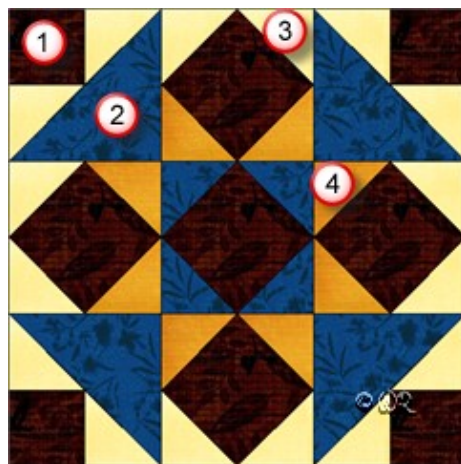
Fabric 4

Cut 4 squares 2 $\frac{3}{8}$ " and bisect on one diagonal

Gettysburg

6" finished quilt block

Fabric Placement



How-to Notes



Bisect square on one diagonal



Bisect square on both diagonals

*All seam allowances are 1/4" unless noted otherwise

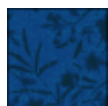
1



Fabric 1

Cut 4 squares 1 1/2"
Cut 5 squares 1-15/16"

2



Fabric 2

Cut 2 squares 2 7/8" and bisect on one diagonal
Cut 2 squares 1 7/8" and bisect on one diagonal

3



Fabric 3

Cut 8 squares 1 7/8" and bisect on one diagonal

4



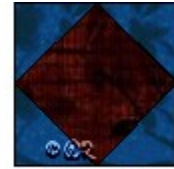
Fabric 4

Cut 4 squares 1 7/8" and bisect on one diagonal

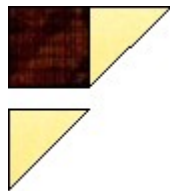
Gettysburg



Make 4



Make 1



Make 4

