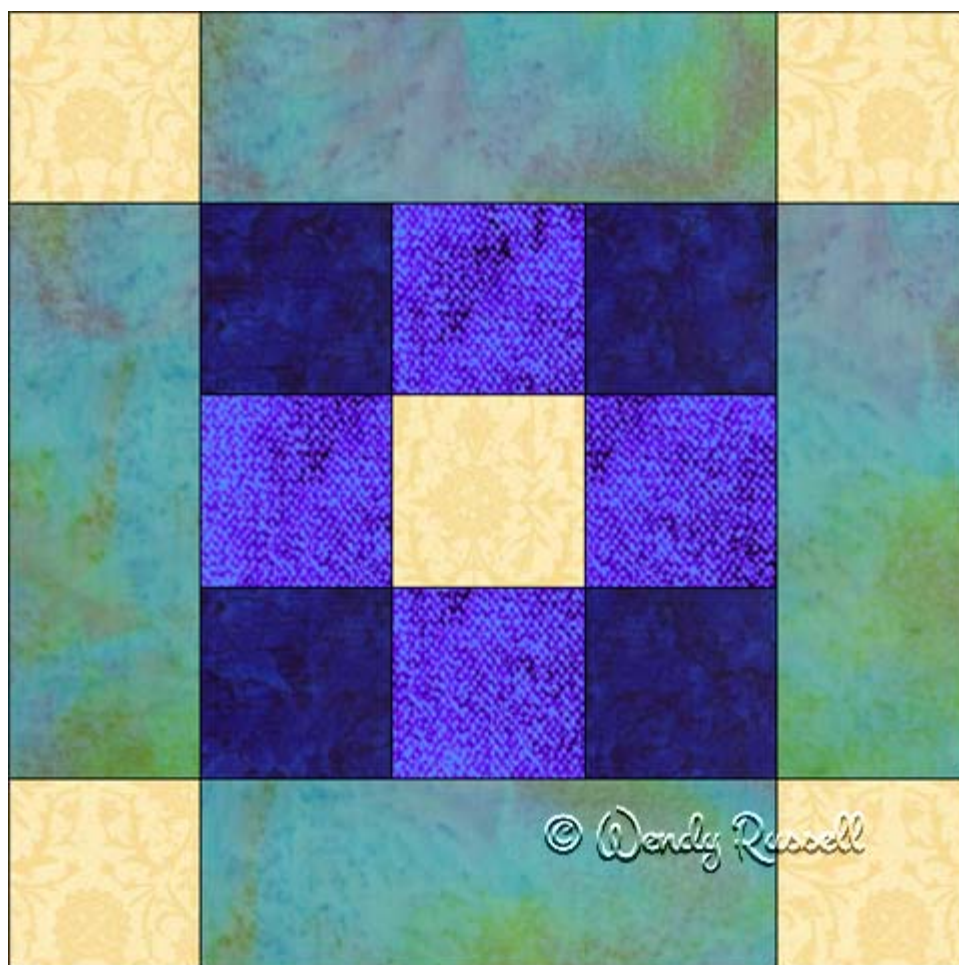


Patchwork Square

Free Quilt Block Pattern

Cross Patch



15" finished quilt block

10" finished quilt block

5" finished quilt block

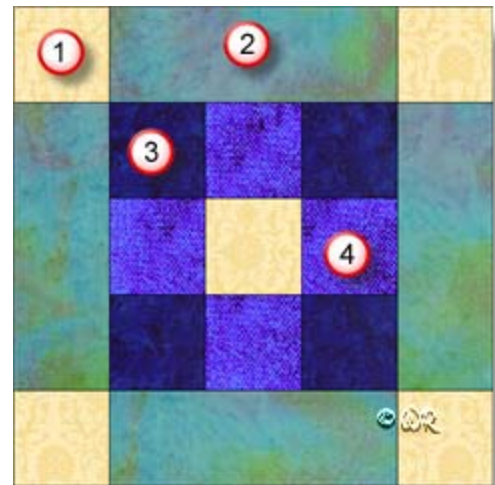
Patchwork Square

Free Quilt Block Pattern

Cross Patch

15" finished quilt block

Fabric Placement



How-to Notes



Bisect square on one diagonal



Bisect square on both diagonals

*All seam allowances are $\frac{1}{4}$ " and included in cutting measurements unless noted otherwise

1



Fabric 1

Cut 5 squares $3\frac{1}{2}$ "

2



Fabric 2

Cut 4 rectangles $9\frac{1}{2}$ " x $3\frac{1}{2}$ "

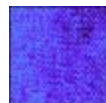
3



Fabric 3

Cut 4 squares $3\frac{1}{2}$ "

4



Fabric 4

Cut 4 squares $3\frac{1}{2}$ "

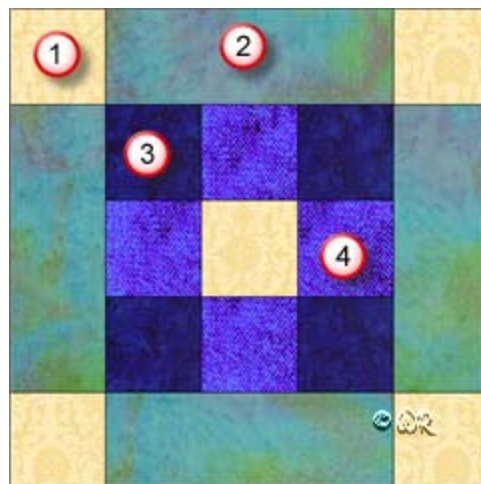
Patchwork Square

Free Quilt Block Pattern

Cross Patch

10" finished quilt block

Fabric Placement



How-to Notes



Bisect square on one diagonal



Bisect square on both diagonals

*All seam allowances are $\frac{1}{4}$ " and included in cutting measurements unless noted otherwise

1



Fabric 1

Cut 5 squares $2\frac{1}{2}$ "

2



Fabric 2

Cut 4 rectangles $6\frac{1}{2}$ " x $2\frac{1}{2}$ "

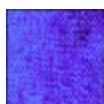
3



Fabric 3

Cut 4 squares $2\frac{1}{2}$ "

4



Fabric 4

Cut 4 squares $2\frac{1}{2}$ "

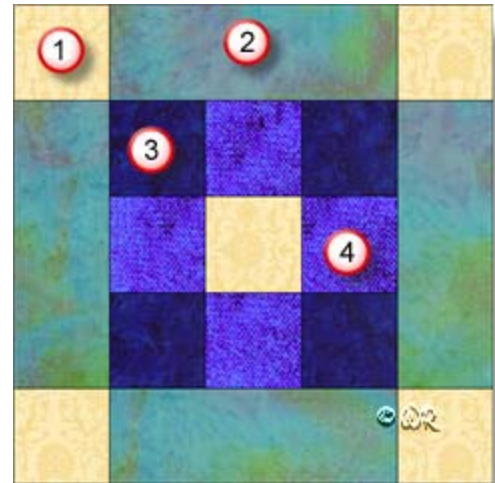
Patchwork Square

Free Quilt Block Pattern

Cross Patch

5" finished quilt block

Fabric Placement



How-to Notes



Bisect square on one diagonal



Bisect square on both diagonals

*All seam allowances are $\frac{1}{4}$ " and included in cutting measurements unless noted otherwise

1



Fabric 1

Cut 5 squares $1\frac{1}{2}$ "

2



Fabric 2

Cut 4 rectangles $3\frac{1}{2}$ " x $1\frac{1}{2}$ "

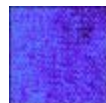
3



Fabric 3

Cut 4 squares $1\frac{1}{2}$ "

4



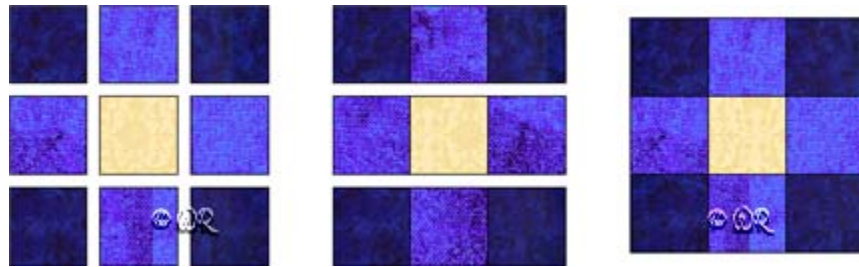
Fabric 4

Cut 4 squares $1\frac{1}{2}$ "

Patchwork Square

Free Quilt Block Pattern

Cross Patch



Make 1

