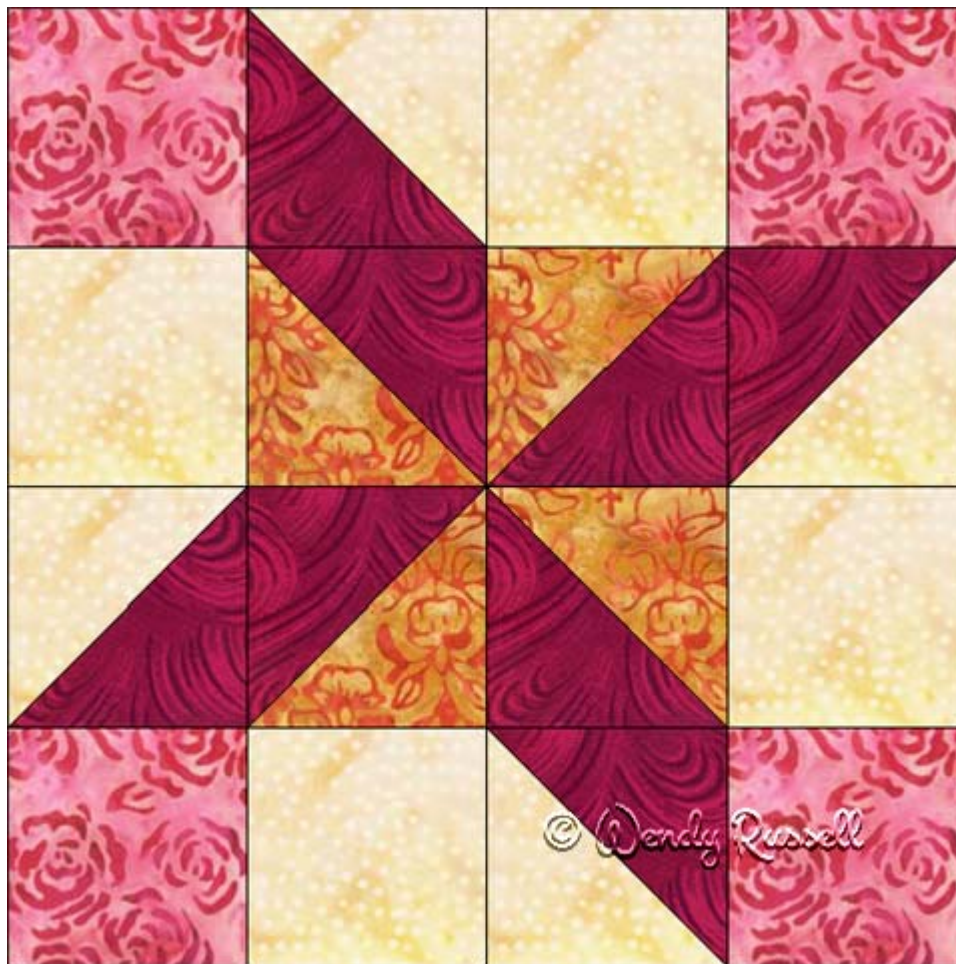


Clay's Choice



12" finished quilt block

8" finished quilt block

6" finished quilt block

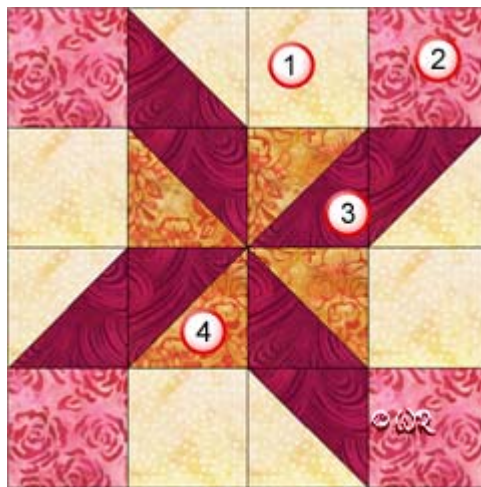
Patchwork Square

Free Quilt Block Pattern

Clay's Choice

12" finished quilt block

Fabric Placement



How-to Notes



Bisect square on one diagonal



Bisect square on both diagonals

*All seam allowances are 1/4" unless noted otherwise

1



Background fabric 1

Cut 4 squares 3 1/2"

Cut 2 squares 3 7/8" and bisect on one diagonal

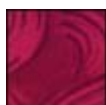
2



Fabric 2

Cut 4 squares 3 1/2"

3



Fabric 3

Cut 4 squares, each 3 7/8" and bisect on one diagonal

4



Fabric 4

Cut 2 squares 3 7/8" and bisect on one diagonal

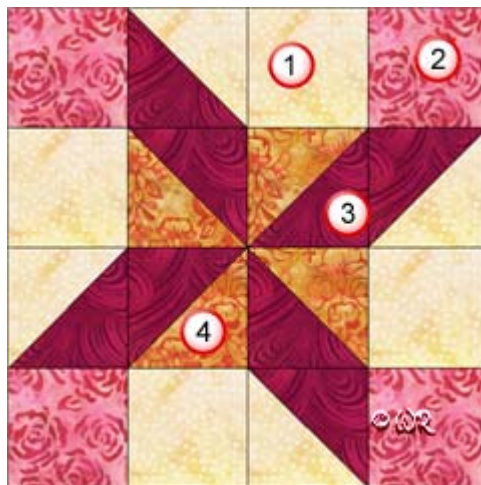
Patchwork Square

Free Quilt Block Pattern

Clay's Choice

8" finished quilt block

Fabric Placement



How-to Notes



Bisect square on one diagonal



Bisect square on both diagonals

*All seam allowances are 1/4" unless noted otherwise

1



Background fabric 1

Cut 4 squares 2 1/2"
Cut 2 squares 2 7/8" and bisect on one diagonal

2



Fabric 2

Cut 4 squares 2 1/2"

3



Fabric 3

Cut 4 squares, each 2 7/8" and bisect on one diagonal

4



Fabric 4

Cut 2 squares 2 7/8" and bisect on one diagonal

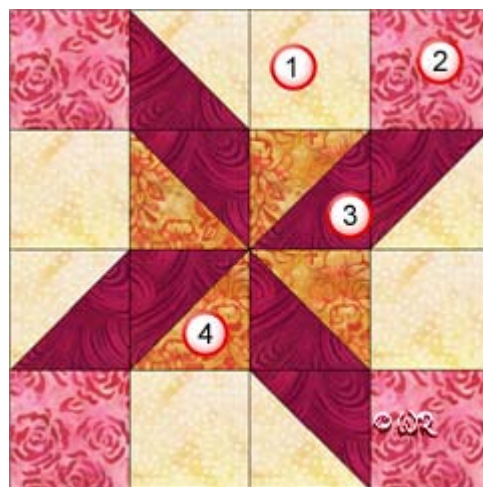
Patchwork Square

Free Quilt Block Pattern

Clay's Choice

6" finished quilt block

Fabric Placement



How-to Notes



Bisect square on one diagonal



Bisect square on both diagonals

*All seam allowances are 1/4" unless noted otherwise

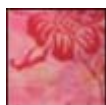
1



Background fabric 1

Cut 4 squares 2"
Cut 2 squares 2 3/8" and bisect on one diagonal

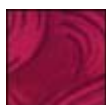
2



Fabric 2

Cut 4 squares 2"

3



Fabric 3

Cut 4 squares, each 2 3/8" and bisect on one diagonal

4



Fabric 4

Cut 2 squares 2 3/8" and bisect on one diagonal

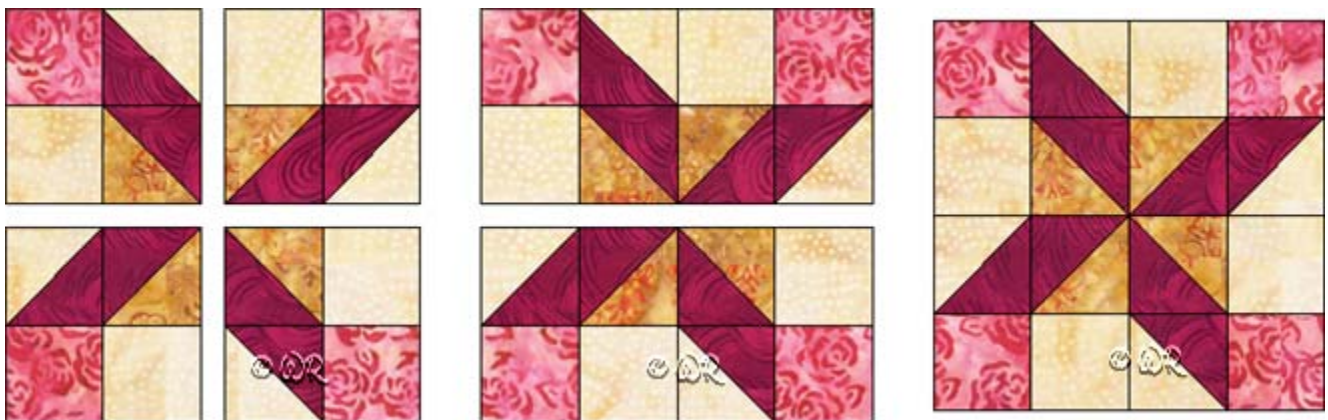
Clay's Choice



Make 4 of each colour combination



Make 4



Clay's Choice

Sample Quilt Layouts

