

Churn Dash - Variation

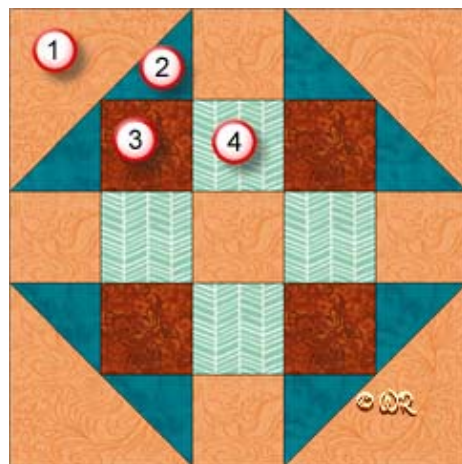


10" finished quilt block

7 ½" finished quilt block

5" finished quilt block

Fabric Placement



Churn Dash- Variation

10" finished quilt block

How-to Notes



Bisect square on one diagonal



Bisect square on both diagonals

*All seam allowances are 1/4" unless noted otherwise

1



Background fabric 1

Cut 5 squares 2 1/2"

Cut 2 squares 4 7/8" and bisect on one diagonal

2



Fabric 2

Cut 4 squares 2 7/8" and bisect on one diagonal

3



Fabric 3

Cut 4 squares 2 1/2"

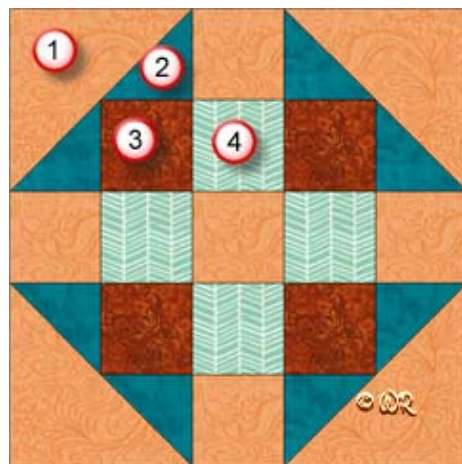
4



Fabric 4

Cut 4 squares 2 1/2"

Fabric Placement



Churn Dash- Variation

7 1/2" finished quilt block

How-to Notes



Bisect square on one diagonal



Bisect square on both diagonals

*All seam allowances are 1/4" unless noted otherwise

1

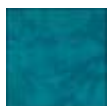


Background fabric 1

Cut 5 squares 2"

Cut 2 squares 3 7/8" and bisect on one diagonal

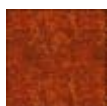
2



Fabric 2

Cut 4 squares 2 3/8" and bisect on one diagonal

3



Fabric 3

Cut 4 squares 2"

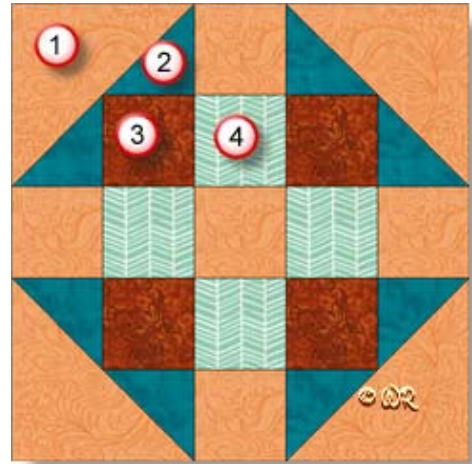
4



Fabric 4

Cut 4 squares 2"

Fabric Placement



Churn Dash- Variation

5" finished quilt block

How-to Notes



Bisect square on one diagonal



Bisect square on both diagonals

*All seam allowances are 1/4" unless noted otherwise

1



Background fabric 1

Cut 5 squares 1 1/2"

Cut 2 squares 2 7/8" and bisect on one diagonal

2



Fabric 2

Cut 4 squares 1 7/8" and bisect on one diagonal

3



Fabric 3

Cut 4 squares 1 1/2"

4



Fabric 4

Cut 4 squares 1 1/2"

Churn Dash - Variation



Make 4



Make 4

