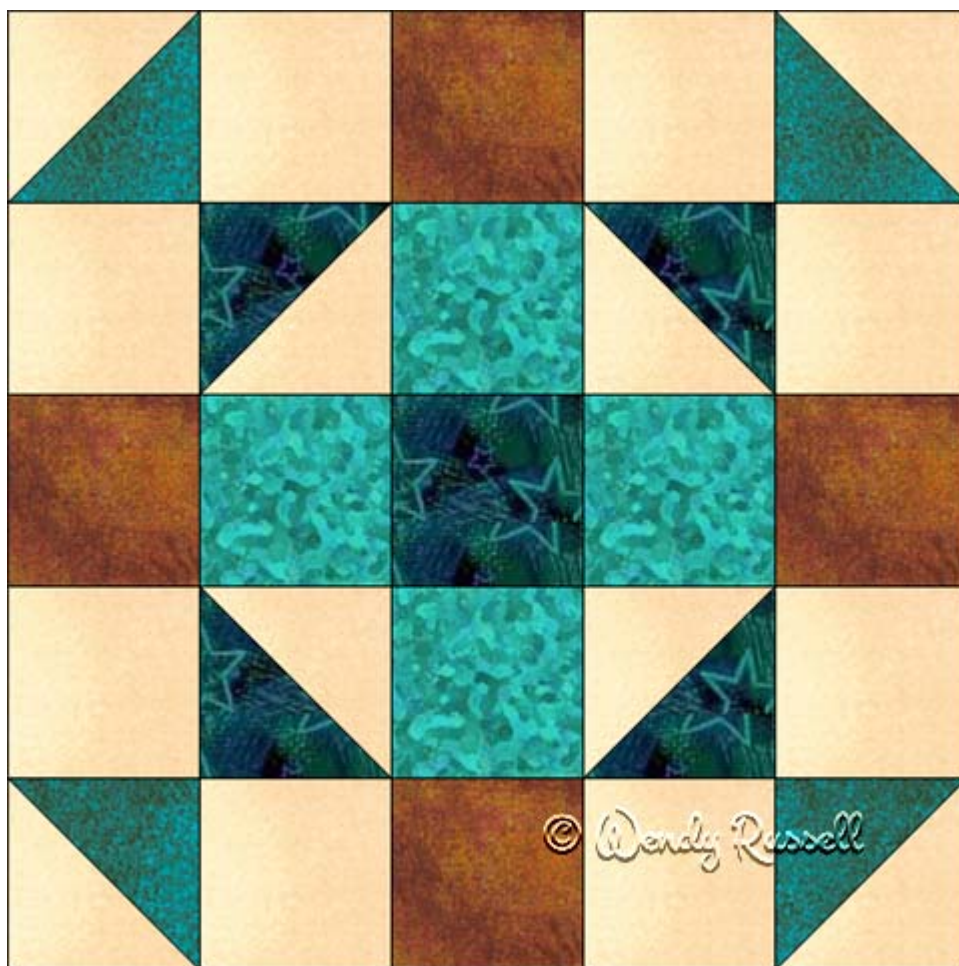


Cain and Abel



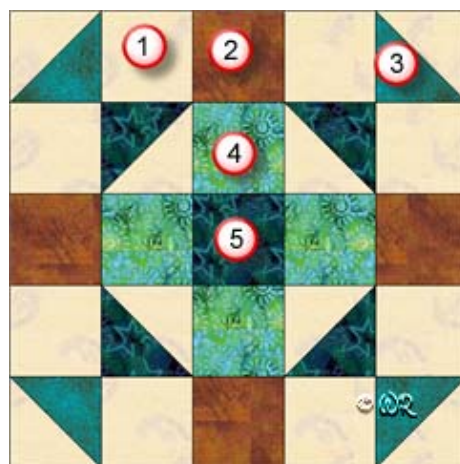
15" finished quilt block

10" finished quilt block

7 ½" finished quilt block

5" finished quilt block

Fabric Placement



Cain and Abel

15" finished quilt block

How-to Notes




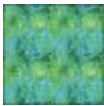



Bisect square on one diagonal

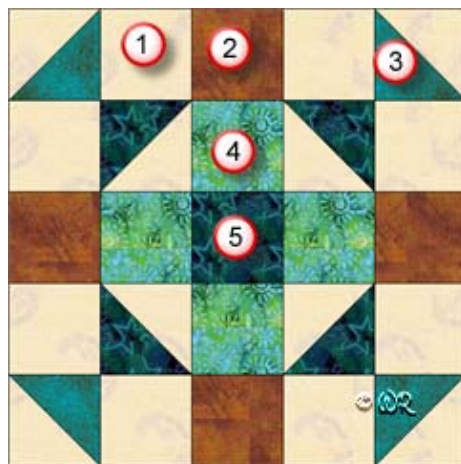


Bisect square on both diagonals

*All seam allowances are 1/4" unless noted otherwise

1		Background fabric 1 Cut 8 squares 3 1/2" Cut 4 squares 3 7/8" and bisect on one diagonal
2		Fabric 2 Cut 4 squares 3 1/2"
3		Fabric 3 Cut 2 squares 3 7/8" and bisect on one diagonal
4		Fabric 4 Cut 4 squares 3 1/2"
5		Fabric 5 Cut 1 square 3 1/2" Cut 2 squares 3 7/8" and bisect on one diagonal

Fabric Placement



Cain and Abel

10" finished quilt block

How-to Notes




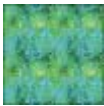



Bisect square on one diagonal

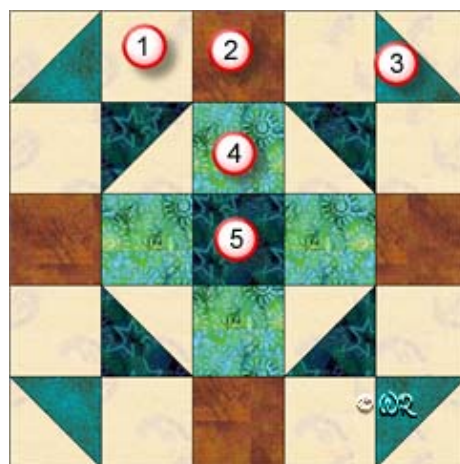


Bisect square on both diagonals

*All seam allowances are 1/4" unless noted otherwise

1		<p>Background fabric 1</p> <p>Cut 8 squares 2 1/2"</p> <p>Cut 4 squares 2 7/8" and bisect on one diagonal</p>
2		<p>Fabric 2</p> <p>Cut 4 squares 2 1/2"</p>
3		<p>Fabric 3</p> <p>Cut 2 squares 2 7/8" and bisect on one diagonal</p>
4		<p>Fabric 4</p> <p>Cut 4 squares 2 1/2"</p>
5		<p>Fabric 5</p> <p>Cut 1 square 2 1/2"</p> <p>Cut 2 squares 2 7/8" and bisect on one diagonal</p>

Fabric Placement



Cain and Abel

7 1/2" finished quilt block

How-to Notes



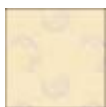
Bisect square on one diagonal



Bisect square on both diagonals

*All seam allowances are 1/4" unless noted otherwise

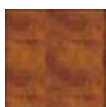
1



Background fabric 1

Cut 8 squares 2"
Cut 4 squares 2 3/8" and bisect on one diagonal

2



Fabric 2

Cut 4 squares 2"

3



Fabric 3

Cut 2 squares 2 3/8" and bisect on one diagonal

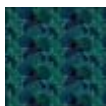
4



Fabric 4

Cut 4 squares 2"

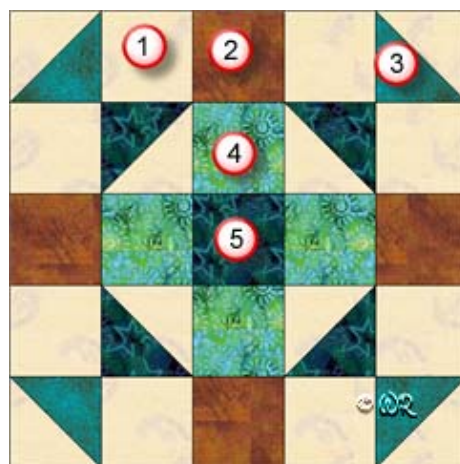
5



Fabric 5

Cut 1 square 2 "
Cut 2 squares 2 3/8" and bisect on one diagonal

Fabric Placement



Cain and Abel

5" finished quilt block

How-to Notes


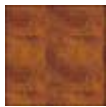


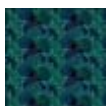


Bisect square on one diagonal



Bisect square on both diagonals

*All seam allowances are 1/4" unless noted otherwise

1		Background fabric 1 Cut 8 squares 1 1/2" Cut 4 squares 1 7/8" and bisect on one diagonal
2		Fabric 2 Cut 4 squares 1 1/2"
3		Fabric 3 Cut 2 squares 1 7/8" and bisect on one diagonal
4		Fabric 4 Cut 4 squares 1 1/2"
5		Fabric 5 Cut 1 square 1 1/2" Cut 2 squares 1 7/8" and bisect on one diagonal

Cain and Abel

