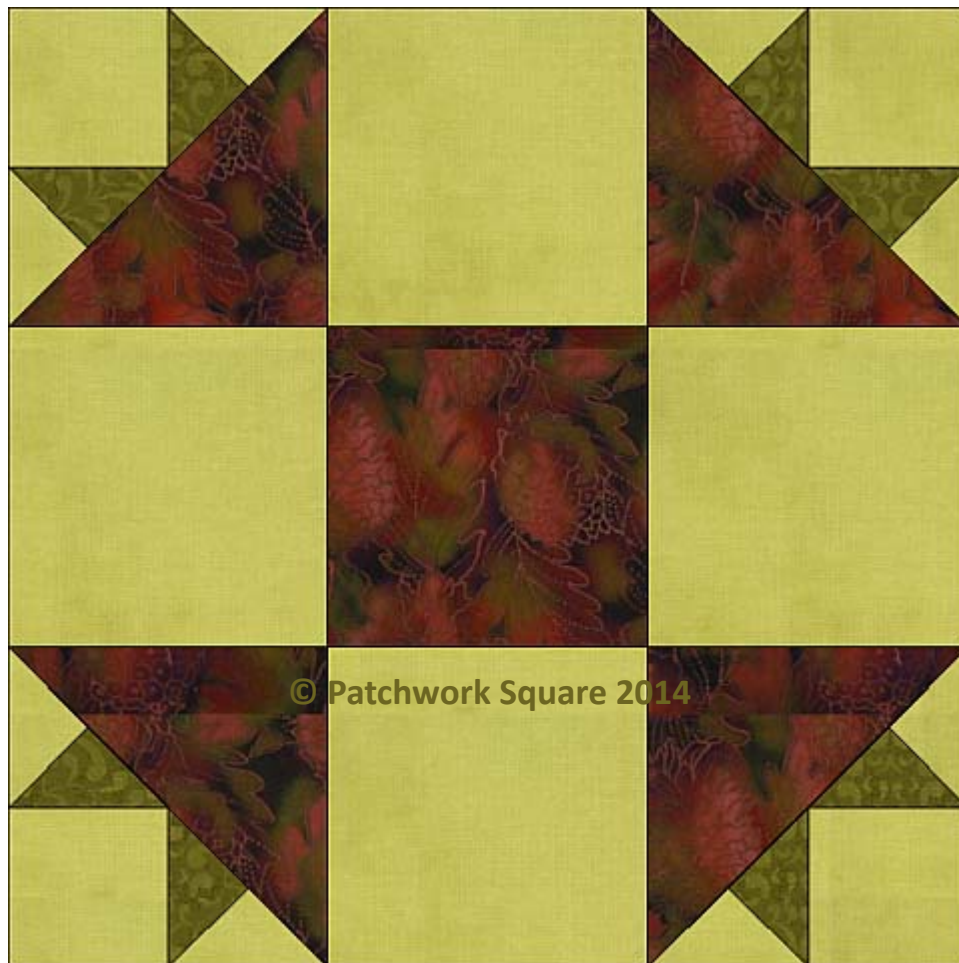


Cactus Plant

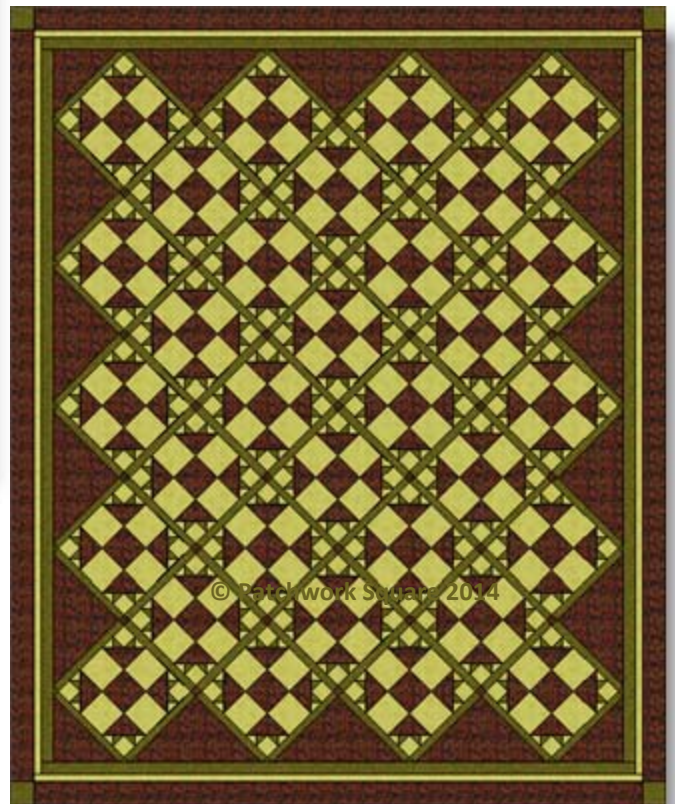
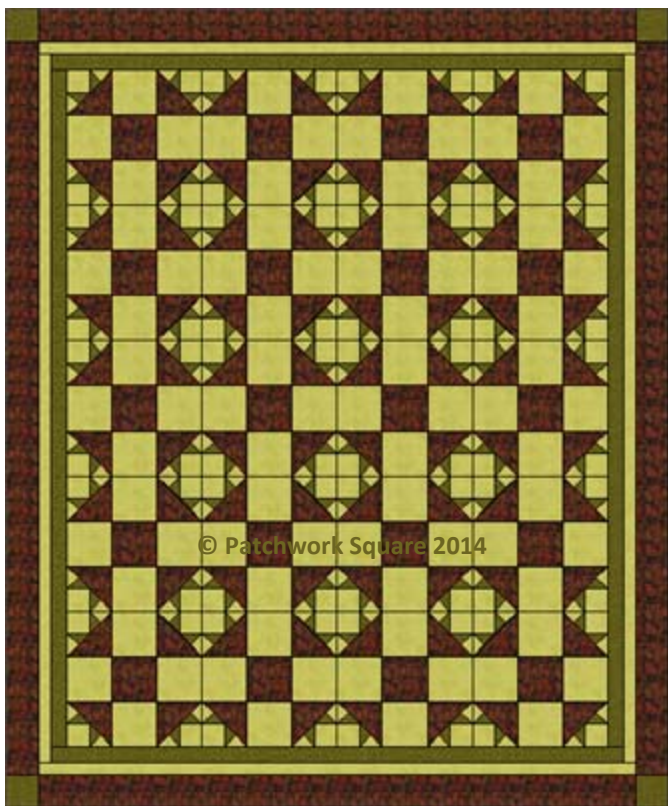


12" finished quilt block

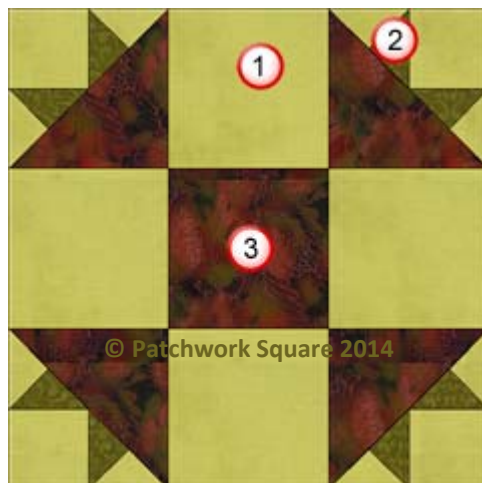
9" finished quilt block

Cactus Plant

Sample Quilt Layouts



Fabric Placement



Cactus Plant

12" finished quilt block

How-to Notes



Bisect square on one diagonal



Bisect square on both diagonals

1



Background fabric

Cut 4 squares 4 ½"

Cut 4 squares 2 ½"

Cut 2 squares 3 ¼" and bisect on both diagonals

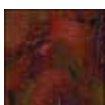
2



Medium fabric

Cut 2 squares 3 ¼" and bisect on both diagonals

3

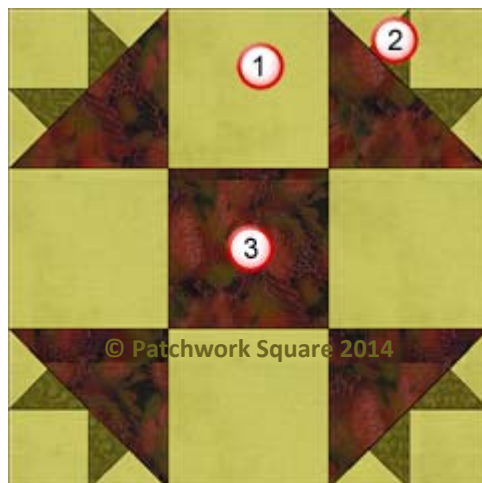


Dark fabric

Cut 1 square 4 ½"

Cut 2 squares 4 ⅞" and bisect on one diagonal

Fabric Placement



Cactus Plant

9" finished quilt block

How-to Notes



Bisect square on one diagonal



Bisect square on both diagonals

1



Background fabric

Cut 4 squares 3 1/2"

Cut 4 squares 2"

Cut 2 squares 2 3/4" and bisect on both diagonals

2



Medium fabric

Cut 2 squares 2 3/4" and bisect on both diagonals

3



Dark fabric

Cut 1 square 3 1/2"

Cut 2 squares 3 7/8" and bisect on one diagonal

Cactus Plant

