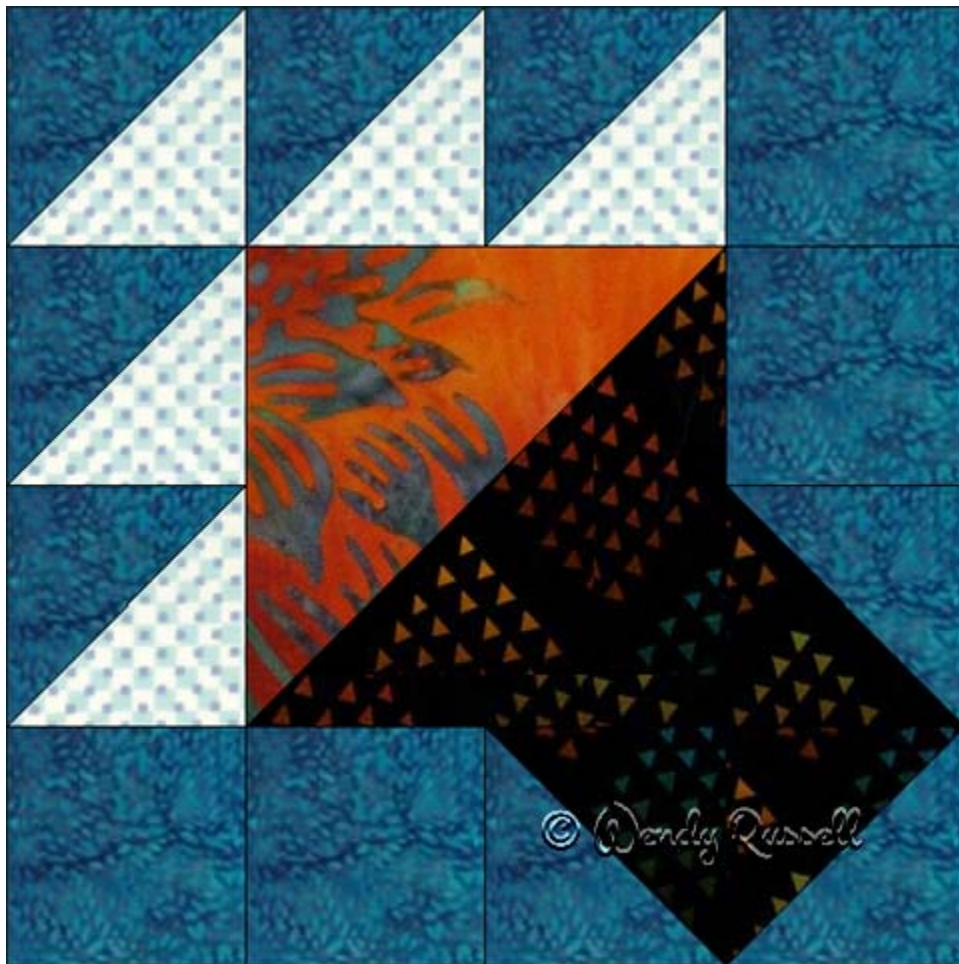
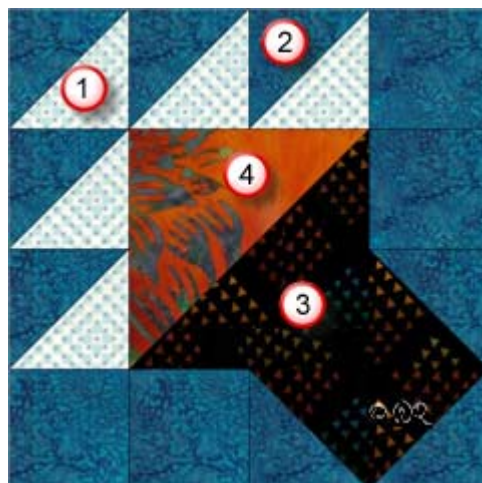


Blueberry Compote



12" finished quilt block
8" finished quilt block
6" finished quilt block

Fabric Placement



Blueberry Compote

12" finished quilt block

How-to Notes



Bisect square on one diagonal



Bisect square on both diagonals

*All seam allowances are 1/4" unless noted otherwise

Note: you will have additional triangles (of some fabrics) left over for other blocks

1



Fabric 1

Cut 3 squares 3 7/8" and bisect on one diagonal

2

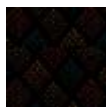


Background fabric 2

Cut 4 squares 3 1/2"

Cut 4 squares 3 7/8" and bisect on one diagonal

3

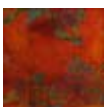


Fabric 3

Cut 2 squares 3 7/8" and bisect on one diagonal

Cut 1 square 6 7/8" and bisect on one diagonal

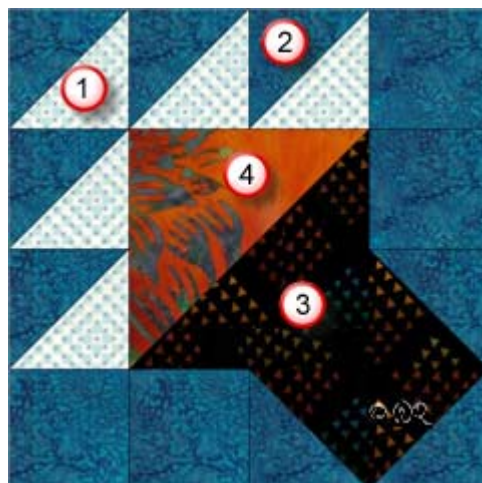
4



Fabric 4

Cut 1 square 6 7/8" and bisect on one diagonal

Fabric Placement



Blueberry Compote

8" finished quilt block

How-to Notes



Bisect square on one diagonal



Bisect square on both diagonals

*All seam allowances are 1/4" unless noted otherwise

Note: you will have additional triangles (of some fabrics) left over for other blocks

1



Fabric 1

Cut 3 squares 2 7/8" and bisect on one diagonal

2

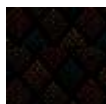


Background fabric 2

Cut 4 squares 2 1/2"

Cut 4 squares 2 7/8" and bisect on one diagonal

3

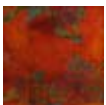


Fabric 3

Cut 2 squares 2 7/8" and bisect on one diagonal

Cut 1 square 4 7/8" and bisect on one diagonal

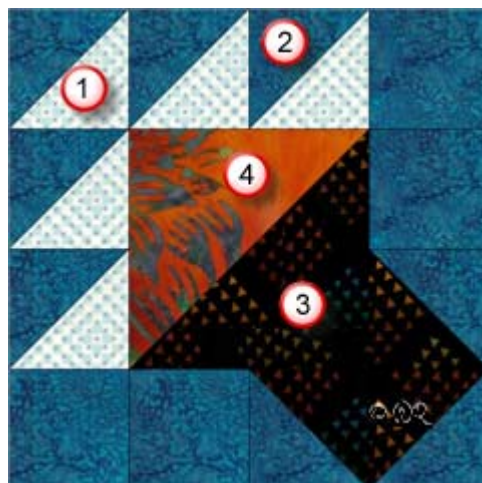
4



Fabric 4

Cut 1 square 4 7/8" and bisect on one diagonal

Fabric Placement



Blueberry Compote

6" finished quilt block

How-to Notes



Bisect square on one diagonal



Bisect square on both diagonals

*All seam allowances are $\frac{1}{4}$ " unless noted otherwise

Note: you will have additional triangles (of some fabrics) left over for other blocks

1



Fabric 1

Cut 3 squares $2\frac{3}{8}$ " and bisect on one diagonal

2

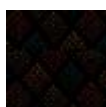


Background fabric 2

Cut 4 squares 2 "

Cut 4 squares $2\frac{3}{8}$ " and bisect on one diagonal

3

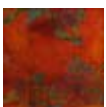


Fabric 3

Cut 2 squares $2\frac{3}{8}$ " and bisect on one diagonal

Cut 1 square $3\frac{7}{8}$ " and bisect on one diagonal

4



Fabric 4

Cut 1 square $3\frac{7}{8}$ " and bisect on one diagonal

Blueberry Compote

