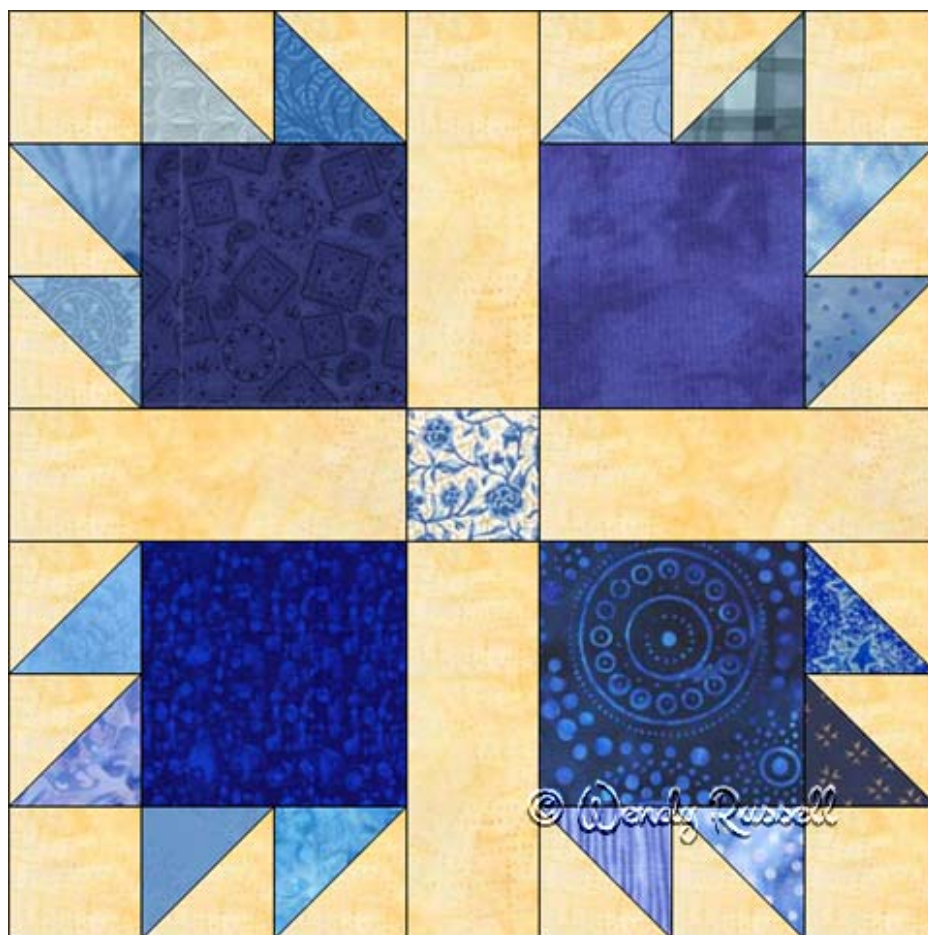


## Bear's Paw



- 14" finished quilt block
- 10 ½" finished quilt block
- 7" finished quilt block

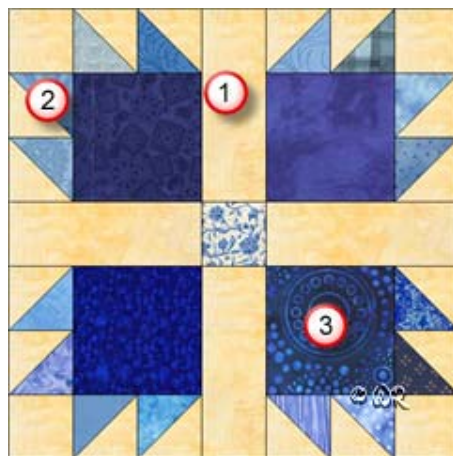
# Patchwork Square

Free Quilt Block Pattern

## Bear's Paw

14" finished quilt block

Fabric Placement



### How-to Notes



Bisect square on one diagonal



Bisect square on both diagonals

1



#### Background fabric

Cut 4 squares 2 1/2"

Cut 4 rectangles 6 1/2" x 2 1/2"

Cut 8 squares 2 7/8" and bisect on one diagonal

2



#### Assorted light fabrics for the "toes"

Cut 8 squares 2 7/8" and bisect on one diagonal

Cut one square for centre of block 2 1/2"

3



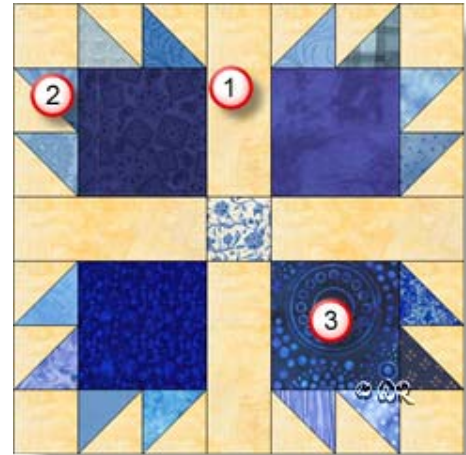
#### Assorted dark fabrics for the "paws"

Cut 4 squares 4 1/2"

## Bear's Paw

10 1/2" finished quilt block

Fabric Placement



### How-to Notes



Bisect square on one diagonal



Bisect square on both diagonals

**1**



#### Background fabric

Cut 4 squares 2"

Cut 4 rectangles 5" x 2"

Cut 8 squares 2 3/8" and bisect on one diagonal

**2**



#### Assorted light fabrics for the "toes"

Cut 8 squares 2 3/8" and bisect on one diagonal

Cut one square for centre of block 2"

**3**



#### Assorted dark fabrics for the "paws"

Cut 4 squares 3 1/2"

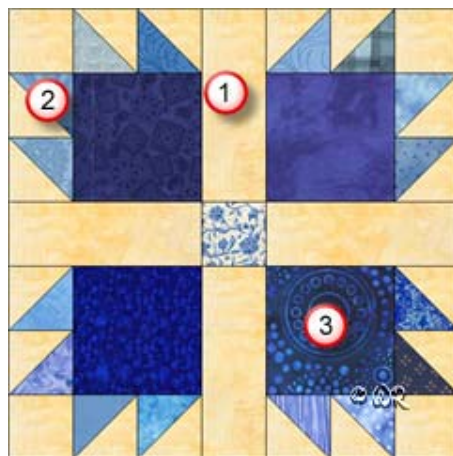
# Patchwork Square

Free Quilt Block Pattern

## Bear's Paw

7" finished quilt block

Fabric Placement



### How-to Notes



Bisect square on one diagonal



Bisect square on both diagonals

**1**



#### Background fabric

Cut 4 squares 1 1/2"

Cut 4 rectangles 3 1/2" x 1 1/2"

Cut 8 squares 1 7/8" and bisect on one diagonal

**2**



#### Assorted light fabrics for the "toes"

Cut 8 squares 1 7/8" and bisect on one diagonal

Cut one square for centre of block 1 1/2"

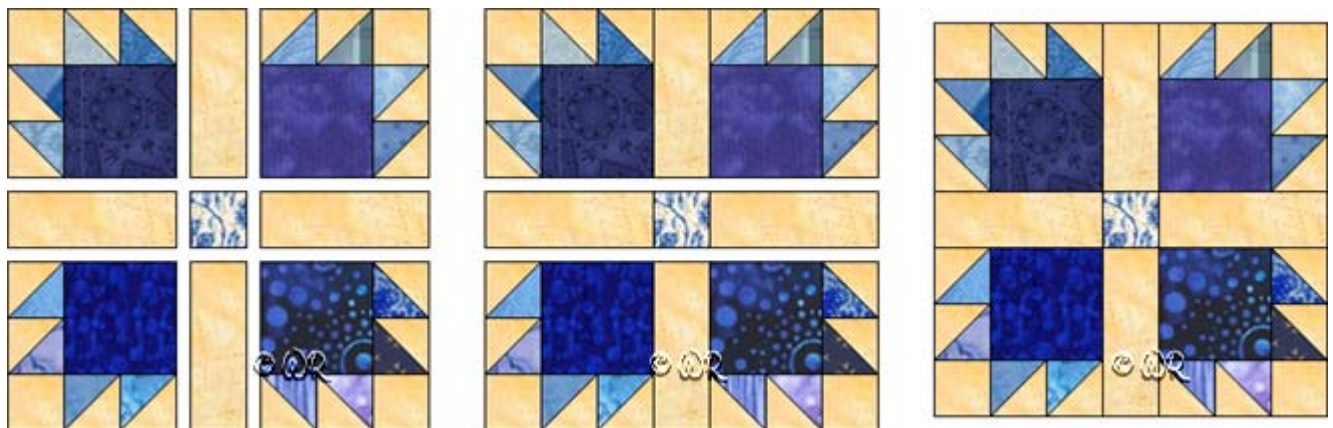
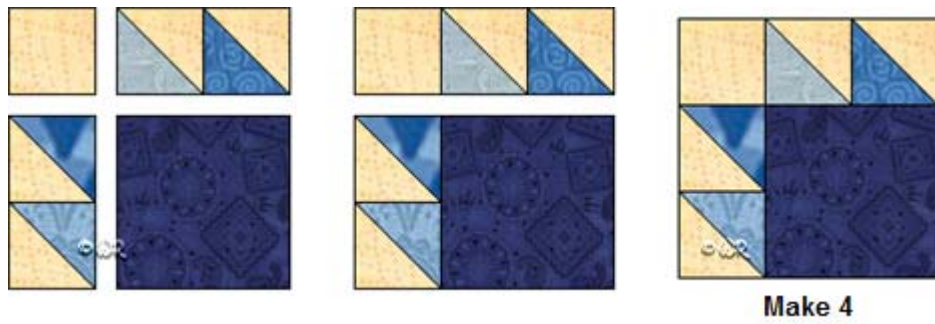
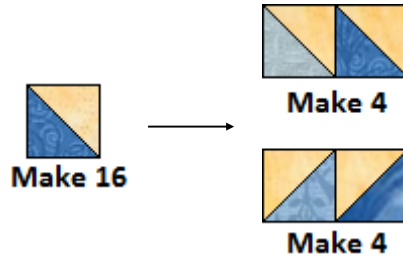
**3**



#### Assorted dark fabrics for the "paws"

Cut 4 squares 2 1/2"

## Bear's Paw



## Bear's Paw

### Sample Quilt Layouts

