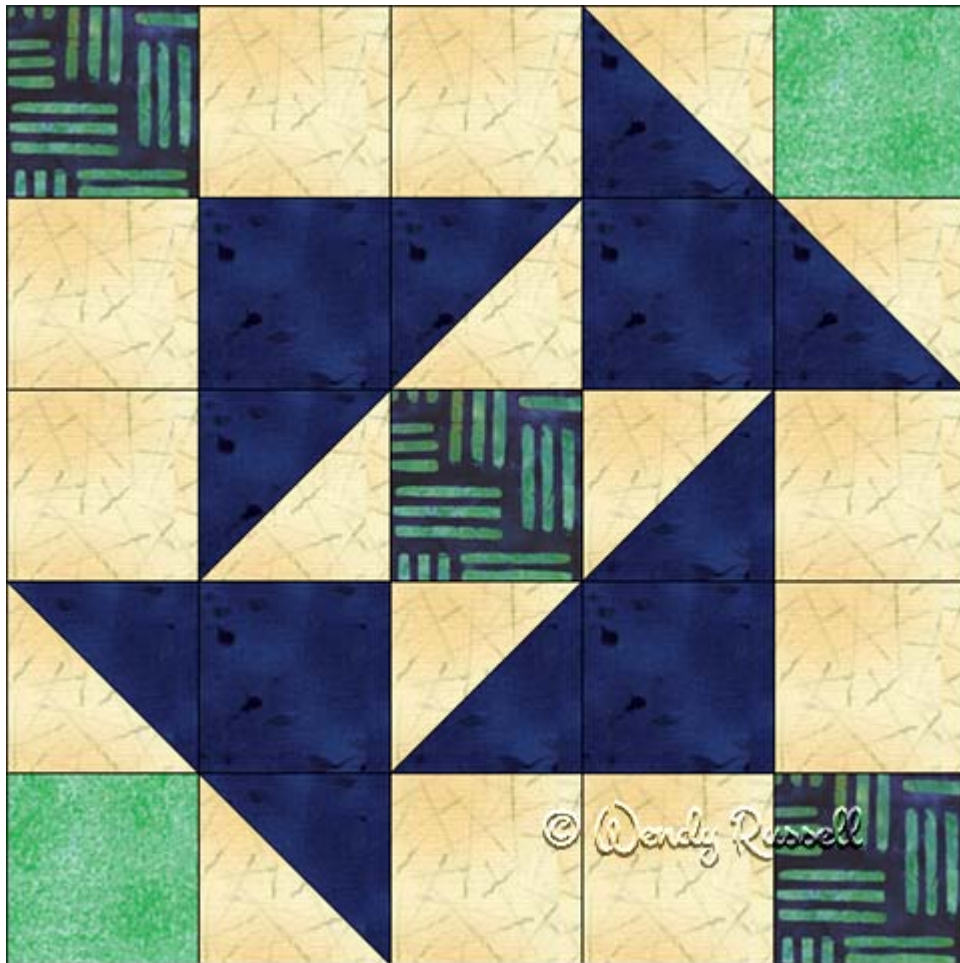


Auntie's Puzzle



15" finished quilt block

10" finished quilt block

7 ½" finished quilt block

5" finished quilt block

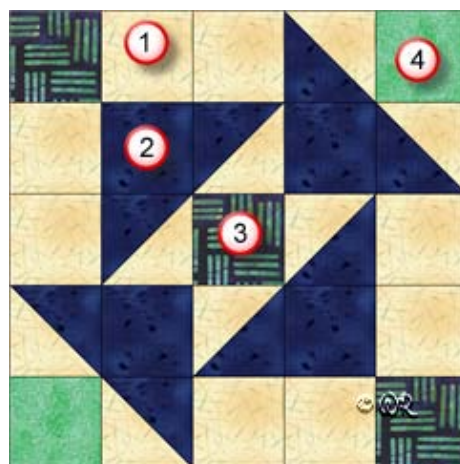
Patchwork Square

Free Quilt Block Pattern

Auntie's Puzzle

15" finished quilt block

Fabric Placement



How-to Notes



Bisect square on one diagonal



Bisect square on both diagonals

*All seam allowances are 1/4" unless noted otherwise

1



Background fabric 1

Cut 8 squares 3 1/2"

Cut 4 squares 3 7/8" and bisect on one diagonal

2

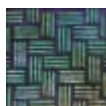


Fabric 2

Cut 4 squares 3 1/2"

Cut 4 squares 3 7/8" and bisect on one diagonal

3



Fabric 3

Cut 3 squares 3 1/2"

4



Fabric 4

Cut 2 squares 3 1/2"

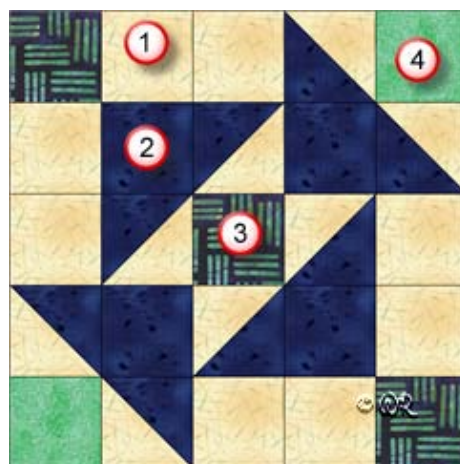
Patchwork Square

Free Quilt Block Pattern

Auntie's Puzzle

10" finished quilt block

Fabric Placement



How-to Notes



Bisect square on one diagonal



Bisect square on both diagonals

*All seam allowances are 1/4" unless noted otherwise

1



Background fabric 1

Cut 8 squares 2 1/2"

Cut 4 squares 2 7/8" and bisect on one diagonal

2

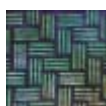


Fabric 2

Cut 4 squares 2 1/2"

Cut 4 squares 2 7/8" and bisect on one diagonal

3



Fabric 3

Cut 3 squares 2 1/2"

4



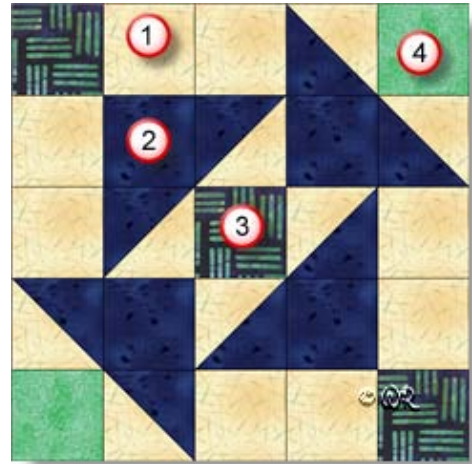
Fabric 4

Cut 2 squares 2 1/2"

Auntie's Puzzle

7 1/2" finished quilt block

Fabric Placement



How-to Notes



Bisect square on one diagonal



Bisect square on both diagonals

*All seam allowances are 1/4" unless noted otherwise

1



Background fabric 1

Cut 8 squares 2"

Cut 4 squares 2 3/8" and bisect on one diagonal

2



Fabric 2

Cut 4 squares 2"

Cut 4 squares 2 3/8" and bisect on one diagonal

3



Fabric 3

Cut 3 squares 2"

4



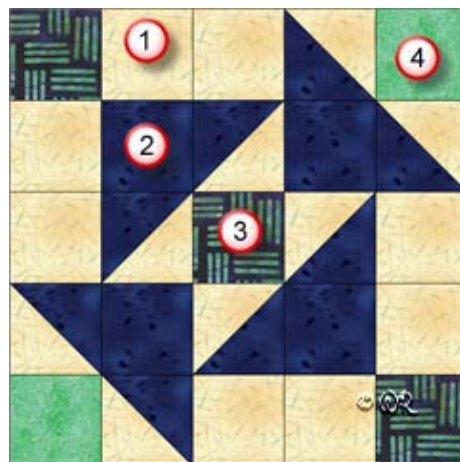
Fabric 4

Cut 2 squares 2"

Auntie's Puzzle

5" finished quilt block

Fabric Placement



How-to Notes



Bisect square on one diagonal



Bisect square on both diagonals

*All seam allowances are 1/4" unless noted otherwise

1



Background fabric 1

Cut 8 squares 1 1/2"

Cut 4 squares 1 7/8" and bisect on one diagonal

2

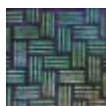


Fabric 2

Cut 4 squares 1 1/2"

Cut 4 squares 1 7/8" and bisect on one diagonal

3



Fabric 3

Cut 3 squares 1 1/2"

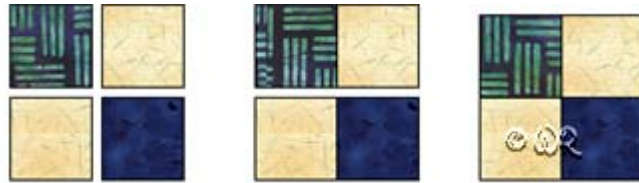
4



Fabric 4

Cut 2 squares 1 1/2"

Auntie's Puzzle



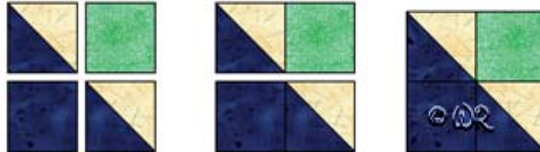
Make 2



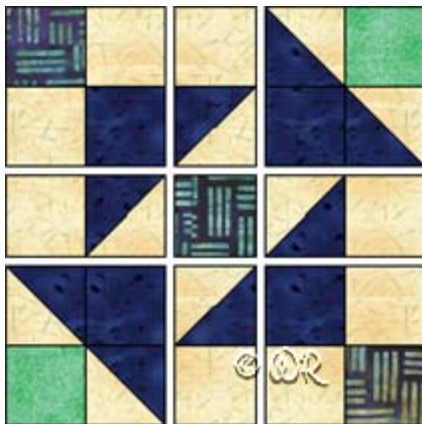
Make 8



Make 4



Make 2



Auntie's Puzzle

Sample Quilt Layouts

