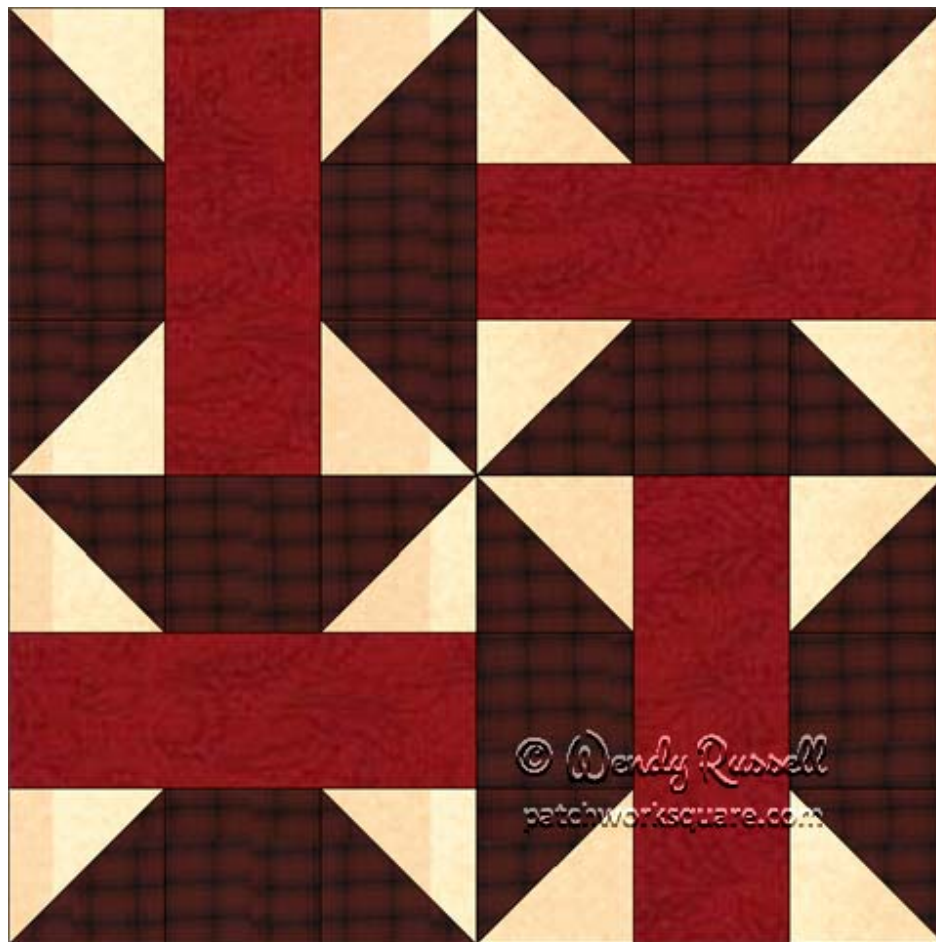


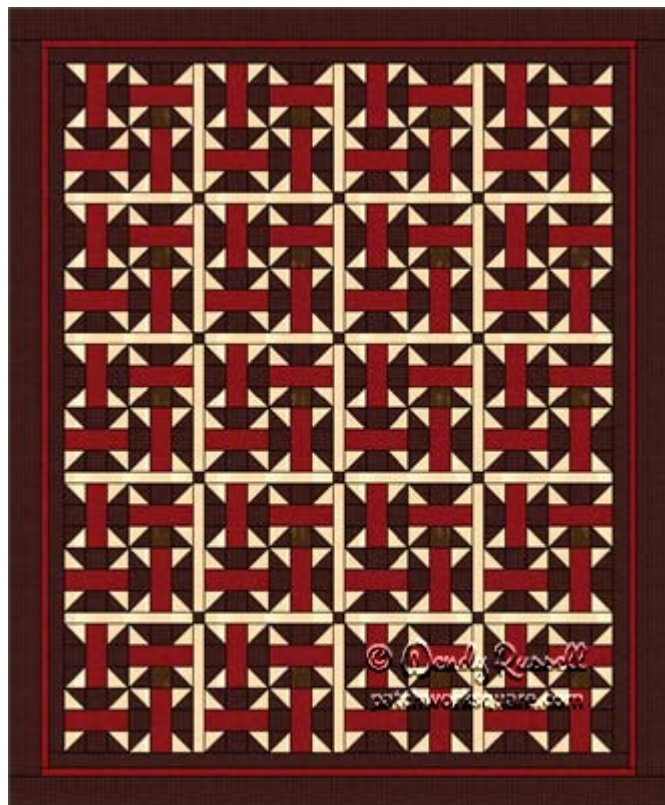
Arkansas Traveller



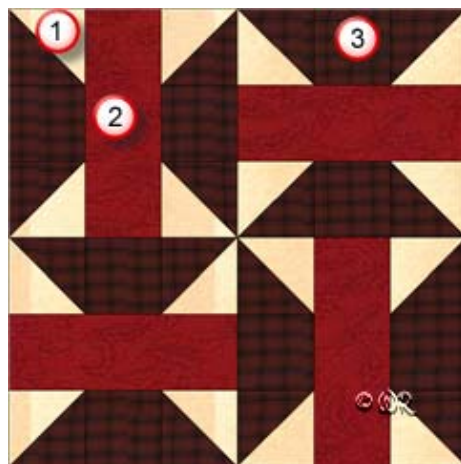
12" finished quilt block
9" finished quilt block
6" finished quilt block

Arkansas Traveller

Sample Quilt Layouts



Fabric Placement



Arkansas Traveller

12" finished quilt block

How-to Notes



Bisect square on one diagonal



Bisect square on both diagonals

*All seam allowances are 1/4" unless noted otherwise

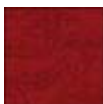
1



Background fabric

Cut 8 squares 2 7/8" and bisect on one diagonal

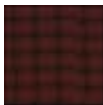
2



Fabric 2

Cut 4 rectangles 2 1/2" x 6 1/2"

3

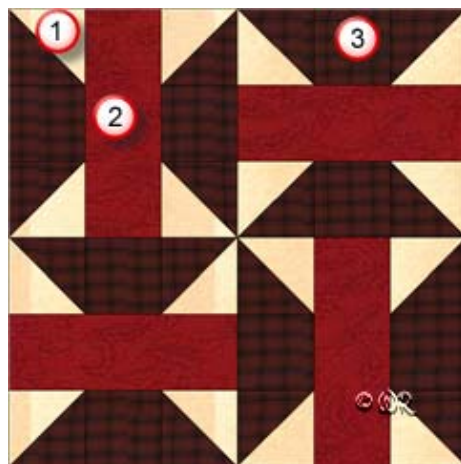


Fabric 3

Cut 8 squares 2 1/2"

Cut 8 squares 2 7/8" and bisect on one diagonal

Fabric Placement



Arkansas Traveller

9" finished quilt block

How-to Notes



Bisect square on one diagonal



Bisect square on both diagonals

*All seam allowances are 1/4" unless noted otherwise

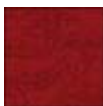
1



Background fabric

Cut 8 squares 2 3/8" and bisect on one diagonal

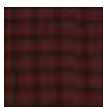
2



Fabric 2

Cut 4 rectangles 2" x 5"

3

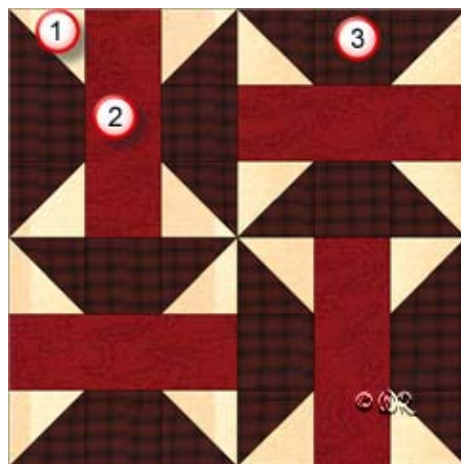


Fabric 3

Cut 8 squares 2"

Cut 8 squares 2 3/8" and bisect on one diagonal

Fabric Placement



Arkansas Traveller

6" finished quilt block

How-to Notes



Bisect square on one diagonal



Bisect square on both diagonals

*All seam allowances are 1/4" unless noted otherwise

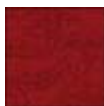
1



Background fabric

Cut 8 squares 1 7/8" and bisect on one diagonal

2



Fabric 2

Cut 4 rectangles 1 1/2" x 3 1/2"

3



Fabric 3

Cut 8 squares 1 1/2"

Cut 8 squares 1 7/8" and bisect on one diagonal

Arkansas Traveller

