

Amish Star

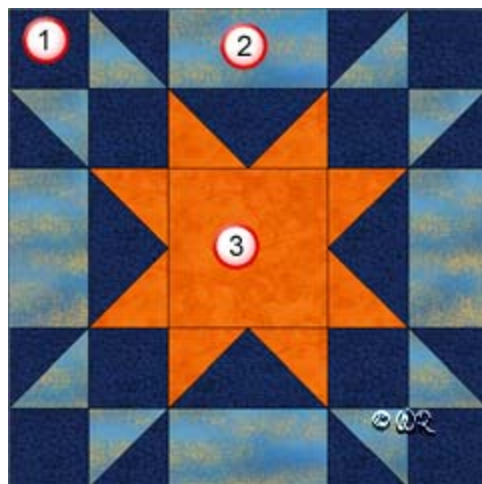


15" finished quilt block
12" finished quilt block
9" finished quilt block
6" finished quilt block

Amish Star

15" finished quilt block

Fabric Placement



How-to Notes



Bisect square on one diagonal



Bisect square on both diagonals

*All seam allowances are 1/4" unless noted otherwise

1



Background fabric

Cut 8 squares 3"

Cut 4 squares 3 3/8" and bisect on one diagonal

Cut 1 square 6 1/4" and bisect on both diagonals

2



Fabric 2

Cut 4 squares 3 3/8" and bisect on one diagonal

Cut 4 rectangles 3" x 5 1/2"

3



Fabric 3

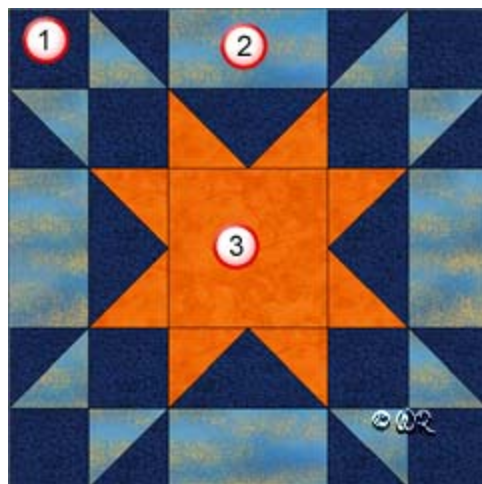
Cut 1 square 5 1/2"

Cut 4 squares 3 3/8" and bisect on one diagonal

Amish Star

12" finished quilt block

Fabric Placement



How-to Notes



Bisect square on one diagonal



Bisect square on both diagonals

*All seam allowances are $\frac{1}{4}$ " unless noted otherwise

1



Background fabric

Cut 8 squares $2\frac{1}{2}$ "

Cut 4 squares $2\frac{7}{8}$ " and bisect on one diagonal

Cut 1 square $5\frac{1}{4}$ " and bisect on both diagonals

2



Fabric 2

Cut 4 squares $2\frac{7}{8}$ " and bisect on one diagonal

Cut 4 rectangles $2\frac{1}{2}$ " x $4\frac{1}{2}$ "

3



Fabric 3

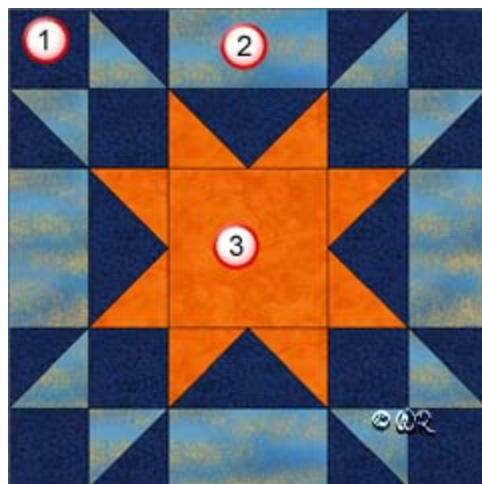
Cut 1 square $4\frac{1}{2}$ "

Cut 4 squares $2\frac{7}{8}$ " and bisect on one diagonal

Amish Star

9" finished quilt block

Fabric Placement



How-to Notes



Bisect square on one diagonal



Bisect square on both diagonals

*All seam allowances are $\frac{1}{4}$ " unless noted otherwise

1



Background fabric

Cut 8 squares 2"

Cut 4 squares $2\frac{3}{8}$ " and bisect on one diagonal

Cut 1 square $4\frac{1}{4}$ " and bisect on both diagonals

2



Fabric 2

Cut 4 squares $2\frac{3}{8}$ " and bisect on one diagonal

Cut 4 rectangles 2" x $3\frac{1}{2}$ "

3



Fabric 3

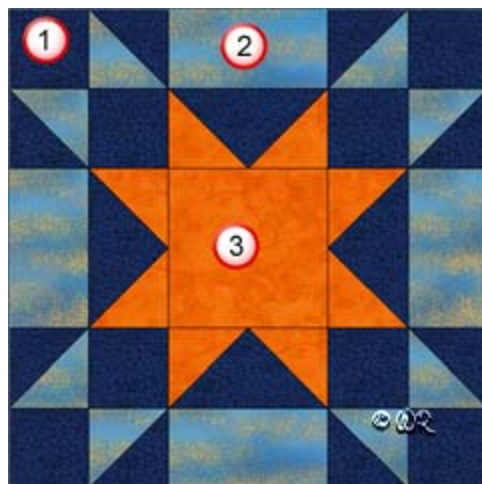
Cut 1 square $3\frac{1}{2}$ "

Cut 4 squares $2\frac{3}{8}$ " and bisect on one diagonal

Amish Star

6" finished quilt block

Fabric Placement



How-to Notes



Bisect square on one diagonal



Bisect square on both diagonals

*All seam allowances are $\frac{1}{4}$ " unless noted otherwise

1



Background fabric

Cut 8 squares $1\frac{1}{2}$ "

Cut 4 squares $1\frac{7}{8}$ " and bisect on one diagonal

Cut 1 square $3\frac{3}{4}$ " and bisect on both diagonals

2



Fabric 2

Cut 4 squares $1\frac{7}{8}$ " and bisect on one diagonal

Cut 4 rectangles $1\frac{1}{2}$ " x $2\frac{1}{2}$ "

3

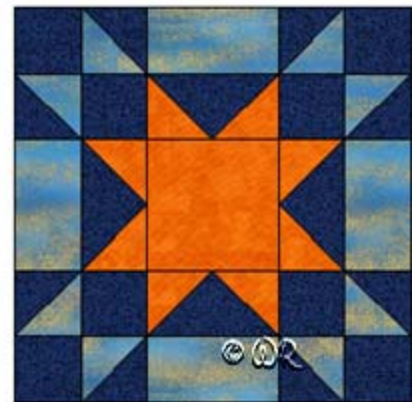
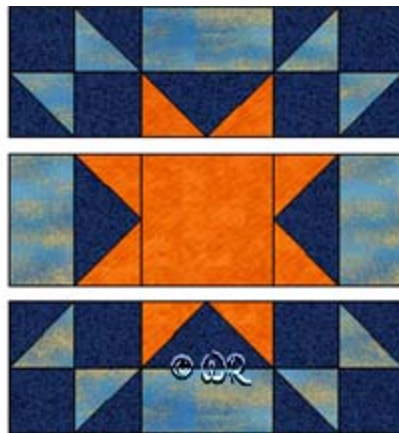
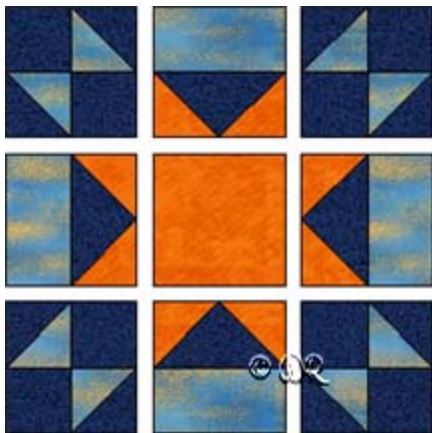
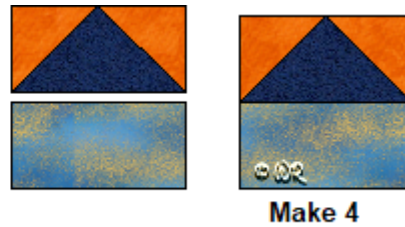
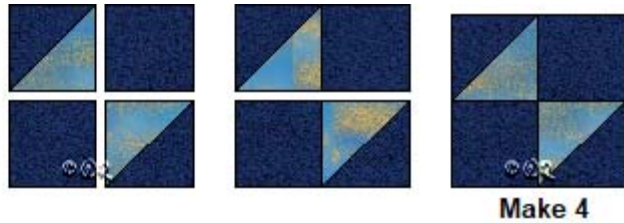
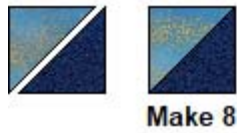


Fabric 3

Cut 1 square $2\frac{1}{2}$ "

Cut 4 squares $1\frac{7}{8}$ " and bisect on one diagonal

Amish Star



Amish Star

Sample Quilt Layouts

